

REPUBLIC OF TRINIDAD & TOBAGO



NIHERST

NATIONAL INSTITUTE
OF HIGHER EDUCATION
RESEARCH, SCIENCE AND TECHNOLOGY

INCORPORATED BY ACT OF PARLIAMENT ACT NO 20 OF 1984

SCIENCE AND TECHNOLOGY INDICATORS 1995 - 2000

Foreword

Science and Technology (S&T) Indicators, 1995-2000 is the third report in this series to be released by the National Institute of Higher Education, Research, Science and Technology (NIHERST).

High quality education and training are two crucial factors in the development of human resources and are essential characteristics of knowledge-based economies. The future social and economic development of the country depends on the intellectual capacity and capability of its human resource.

This publication presents a compendium of statistics on education which includes enrolment in primary, secondary and tertiary institutions together with examination results at the secondary and tertiary levels. In addition, expenditure on S&T activities and education, and data on key social and economic indicators of the Republic of Trinidad and Tobago are included. The tabulations on graduates with tertiary level qualification provide essential data on the supply of human resource personnel in the various fields of S&T.

The information compiled in this report should assist both public and private sector researchers, decision-makers and planners in policy formulation and evaluation.

NIHERST wishes to thank the various agencies for providing data contained in this publication. The Institute looks forward to their continued support.

NIHERST
Science and Technology Statistical Unit
#8 Serpentine Road
St. Clair
628-1154
e-mail: stresearch@niherst.gov.tt
website: <http://niherst.gov.tt>

Maureen Manchouck
President

April, 2003

Tables of Contents

	Page No.
Foreword	i
Data Highlights	vii
Table No.	
1. Number and Enrolment in Public Educational Institutions 1995/1996 - 1999/2000	1
Chart 1: Enrolment in Primary and Secondary Schools, 1995/1996 – 1999/2000	2
Chart 2: Enrolment in Technical Schools and University, 1995/1996 – 1999/2000... ..	2
2. Number of Public Secondary School Teachers by Gender, Qualification and Professional Training, 1995/1996 - 1999/2000	3
2a. Percentage of Public Secondary School Teachers by Gender, Qualification and Professional Training, 1995/1996 - 1999/2000	4
Chart 3: Percentage of Public Secondary School Teachers by Gender, 1995/1996 – 1999/2000	5
Chart 4: Percentage of Public Secondary School Teachers With and Without University Degree, 1995/1996 – 1999/2000	5
Chart 5: Percentage of Trained and Untrained Public Secondary School Teachers, 1995/1996 – 1999/2000	5
3. Number of Registered Professionals, 1996-2000	6
3a. Registered Professionals Per Hundred Thousand Population, 1996 – 2000	6
3b. Registered Professionals as a Percentage of the Labour Force, 1996 – 2000	6
4. C.X.C. General Proficiency Examination Results by Subject, 1997 - 2000	7
Chart 6: Percentage of C.X.C. O'Level Passes in Mathematics and Science, 1997 – 2000	8
Chart 7: Percentage of C.X.C. O'Level Passes in Technical Studies, 1997 – 2000	8
Chart 7a: Percentage of C.X.C. O'Level Passes in Technical Studies, 1997 – 2000	8
5. University of Cambridge G.C.E. A'Level Examination Results by Subject, 1997 - 2000	9
Chart 8: Percentage of G.C.E. A' Level Examination Passes in Mathematics and Computing, 1997 – 2000	10
Chart 9: Percentage of G.C.E. A' Level Examination Passes in Natural Sciences, 1997 – 2000	10
5a. University of Cambridge G.C.E. A'Level Examination Grades by Subject, 2000	11
5b. Percentage Distribution of G.C.E. A'Level Examination Grades by Subject, 2000	11
6. Enrolment in Technical and Vocational Schools by Technician and Certificate Course and Gender, 1996 -2001	12
Chart 10: Enrolment in Technical and Vocational Schools by Gender, 1996/1997 – 2000/2001	14
7. National Examinations Council Results of Technical and Vocational Schools by Course, 1996-2000	16

Chart 11: Number of Students Writing the Technician's Examination, 1996 – 2000	...	18
Chart 12: Percentage Passes in the Technician's Examination, 1996 – 2000	18
8. Enrolment of Students at the Eastern Caribbean Institute of Agriculture and Forestry, 1995/1997 – 1999/2001	19
9. Registration of Trinidad and Tobago Students in First Degrees at The University of the West Indies by Faculty and Gender, 1995/1996 – 1999/2000	20
9a. Percentage Distribution of Trinidad and Tobago Students Registered in First Degrees at The University of the West Indies by Faculty and Gender, 1995/1996 – 1999/2000 (Column)		21
9b. Percentage Distribution of Trinidad and Tobago Students Registered in First Degrees at The University of the West Indies by Faculty and Gender, 1995/1996 – 1999/2000 (Row)		22
Chart 13: Total Registration in First Degrees by Gender, 1995/1996 – 1999/2000	...	23
Chart 14: Registration in First Degrees by Faculty, 1995/1996 – 1999/2000	23
10. New Admission of Trinidad and Tobago Students in First Degrees at The University of the West Indies by Faculty and Gender, 1995/1996-1999/2000	24
10a. Percentage Distribution of New Admission of Trinidad and Tobago Students in First Degrees at The University of the West Indies by Faculty and Gender, 1995/1996-1999/2000 (Column)		25
10b. Percentage Distribution of New Admission of Trinidad and Tobago Students in First Degrees at The University of the West Indies by Faculty and Gender, 1995/1996-1999/2000 (Row)		26
Chart 15: New Admission in First Degrees by Gender, 1995/1996 – 1999/2000	27
Chart 16: New Admission in First Degrees by Faculty, 1995/1996 – 1999/2000	27
11. Registration of Trinidad and Tobago Students in Higher Degrees at The University of the West Indies by Faculty and Gender, 1995/1996-1999/2000	28
11a. Percentage Distribution of Trinidad and Tobago Students Registered in Higher Degrees at The University of the West Indies by Faculty and Gender, 1995/1996-1999/2000 (Column)	...	29
11b. Percentage Distribution of Trinidad and Tobago Students Registered in Higher Degrees at The University of the West Indies by Faculty and Gender, 1995/1996-1999/2000 (Row)	...	30
Chart 17: Registration in Higher Degrees by Gender, 1995/1996 – 1999/2000	31
Chart 18: Registration in Higher Degrees by Faculty, 1995/1996 – 1999/2000	31
12. New Admission of Trinidad and Tobago Students in Higher Degrees at The University of the West Indies by Faculty and Gender, 1995/1996-1999/2000	32
12a. Percentage Distribution of New Admission of Trinidad and Tobago Students in Higher Degrees at The University of the West Indies by Faculty and Gender, 1995/1996-1999/2000 (Column)		33
12b. Percentage Distribution of New Admission of Trinidad and Tobago Students in Higher Degrees at The University of the West Indies by Faculty and Gender, 1995/1996-1999/2000 (Row)		34
Chart 19: New Admission in Higher Degrees by Gender, 1995/1996 – 1999/2000	...	35
Chart 20: New Admission in Higher Degrees by Faculty, 1995/1996 – 1999/2000	...	35
13. Trinidad and Tobago Graduates from The University of the West Indies by Faculty and Gender, 1995/1996-1999/2000 (First Degree Awards)	36
13a. Percentage Distribution of Trinidad and Tobago Graduates from The University of the West Indies by Faculty and Gender, 1995/1996-1999/2000 (First Degree Awards) (Column)	...	37
13b. Percentage Distribution of Trinidad and Tobago Graduates from The University of the West Indies by Faculty and Gender, 1995/1996-1999/2000	38
Chart 21: Graduates in First Degrees by Gender, 1995/1996 – 1999/2000	39
Chart 22: Graduates in First Degrees by Faculty, 1995/1996 – 1999/2000	39

14.	Trinidad and Tobago Post – Graduates from The University of the West Indies by Faculty and Gender, 1995/1996-1999/2000 (Higher Degree Awards)	40
14a.	Percentage Distribution of Trinidad and Tobago Post-Graduates from The University of the West Indies by Faculty and Gender, 1995/1996-1999/2000 (Higher Degree Awards) (Column)	41
14b.	Percentage Distribution of Trinidad and Tobago Post-Graduates from The University of the West Indies by Faculty and Gender, 1995/1996-1999/2000 (Higher Degree Awards) (Row)	42
	Chart 23: Post-Graduates by Gender, 1995/1996 – 1999/2000	43
	Chart 24: Post-Graduates by Faculty, 1995/1996 – 1999/2000	43
15.	Trinidad and Tobago Post-Graduates from The University of The West Indies by Faculty, Qualification and Gender, 1996/1997-1999/2000 (St. Augustine Campus Only)	44
16.	Labour Force by Employment Status and Educational Attainment, 1996 - 2000	45
17.	Expenditure on Research and Development by Sector, 1996 - 1999	46
17a.	Percentage of Expenditure on Research and Development by Sector, 1996 - 1999	46
17b.	Percentage Change in Expenditure on Research and Development by Sector, 1996 – 1999	46
17c.	Expenditure on Research and Development as a Percentage of Gross Domestic Product, 1996 – 1999	46
	Chart 25: Expenditure on Research and Development, 1996 – 1999	47
18.	Uses of Fund for Gross Capital Formation in Educational Services by Type of Institution, 1996 - 2000	48
19.	Cost Profile of Educational Services by Type of Institution, 1996 - 2000	49
20.	Value Added of Educational Services by Type of Institution, 1996 - 2000 (Constant 1985 prices)	50
21.	Percentage Change in Real Value Added of Educational Services by Type of Institution, 1995-2000 (Constant 1985 prices)	50
22.	Government Expenditure on Education, 1996 – 2000	51
23.	Number of Patent Applications by Residents and Non-Residents, 1996-2000	51
24.	Information and Communication Technology Indicators, 1997 – 2001	51
	Chart 26: Number of Residential and Commercial Telephone Lines, 1997 – 2001	52
	Chart 27: Number of Cellular Telephones, 1997 – 2001	52
	Chart 28: Number of Internet Subscribers, 1997 – 2001	52
25.	Social and Economic Indicators, 1996 – 2000	53
26.	Production of Selected Commodities, 1996 – 2000	54
	Chart 29: Production of Sugar, 1996 – 2000	55
	Chart 30: Production of Crude, 1996 – 2000	55
	Chart 31: Production of Natural Gas, 1996 – 2000	55
	Chart 32: Production of Electricity, 1996 – 2000	56
	Chart 33: Production of Cement, 1996 – 2000	56
	Chart 34: Production of Fertilizer, 1996 – 2000	56
	Chart 35: Production of Methanol, 1996 – 2000	57
	Chart 36: Production of Iron and Steel, 1996 – 2000	57

Data Highlights

Number and Enrolment in Public Educational Institutions

Table 1

Over the period, 1995/1996 to 1999/2000, the number of public educational institutions remained virtually the same, with the exception of a small increase in public primary schools, from 476 to 480.

On the other hand, however, there was a declining trend in primary school enrolment from 185,898 students in 1995/1996 to 163,206 in 1999/2000, a change of 12%.

In the public secondary schools, the data reflect a continuous growth in enrolment from 102,878 in 1995/1996 to 106,188 in the 1997/1998 academic year. Thereafter, enrolment showed marginal annual declines in 1998/1999 and 1999/2000.

Enrolment in public technical and vocational schools decreased by 23%, from 4,639 to 3,559. However, enrolment of Trinidad and Tobago nationals in higher education at The University of the West Indies reflected an increasing trend. Students' enrolment between 1995/1996 and 1999/2000 rose by 25%, from 4,921 to 6,147.

Public Secondary School Teachers

Table 2

Between 1995/1996 and 1999/2000, the total number of public secondary school teachers increased marginally by 207 or 4%. This growth was attributable to the number of females which rose by 11% as the male teacher population declined by 4%.

The number of teachers with university degrees consistently out-numbered those without degrees by a ratio of approximately 1.8:1. Of the teachers with university degrees, a similar proportion was professionally trained and untrained in 1995/1996. In 1999/2000, however, 43% of these teachers possessed professional training compared with 57% untrained. Among teachers without university degrees, 64% were trained and 36% were untrained in 1995/1996. In 1999/2000, a similar percentage of trained and untrained teachers was shown. Compared with 1995/1996, the data in 1999/2000 show that the number of trained secondary school teachers decreased by 14%, from 2,753 to 2,374 while untrained teachers increased by 27%, from 2,192 to 2,778. This situation is likely to impact negatively on the quality of secondary education.

C.X.C. and G.C.E. A' Level Results

Table 4

Mathematics results of the C.X.C. General Proficiency Examination improved from a 30% pass rate in 1997 to 46% in 2000, but continued to reflect a substantial failure rate. Understanding Mathematics at both the primary and secondary level of education may be an issue to be addressed by educators. Growth in the pass rate was also recorded in Agricultural Science from 55% to 75%, Biology from 51% to 65%, Chemistry from 49% to 60% and Physics from 48% to 55% over the reference period, 1997 to 2000.

Improvement in the examination results in technical studies was recorded in 1998 and 1999. In 1998, a pass rate of 70% and more was observed in three, Electricity/Electronics (75%), Information Technology (76%) and Technical Drawing (74%), of the eight examinable subjects. In 1999, a similar level of success was recorded in these three subjects together with Electrical Technology and Woods. In this year also a 68% pass rate in Mechanical Engineering was achieved.

The most significant growth in student participation was seen in Information Technology. In 1997, 364 candidates sat the examination compared with 1,058 in 2000 – 190% growth.

Table 5

Except for minor fluctuations, there was some growth in the number of students who wrote the University of Cambridge G.C.E. A'Level examinations in Mathematics, Computing and Natural Sciences between 1997 and 2000. Over this period, candidates in Further Mathematics increased by 29%, Computing by 27% and Physics by 16%. Relatively high pass rates of above 80% were obtained in Mathematics and Computing and above 70% in Natural Sciences from 1997 to 2000.

Table 5b shows the grades obtained by subject in the year 2000. The largest percentage of students in Mathematics (37%) and Further Mathematics (27%) obtained Grade A passes. Slightly less than 20% of the passes in Biology (17%), Chemistry (19%) and Physics (18%) were Grade As. In Computing, there were only 13% Grade A passes.

Technical Institutions

Table 6

Total enrolment in the technician courses declined from 1,756 in 1996/1997 to 1,267 in 1999/2000 (39%) and then increased to 1,636 in 2000/2001. Enrolment in Mechanical/Production Engineering and Electrical/Electronic Engineering accounted for more than 50% of total enrolment. Except for Science Laboratory, male participation dominated that of female. In the academic year 2000/2001, 81% (1,333) of the total enrolment were males and 19% (303) females. The data reveal a decreasing trend in enrolment in Draughtsmanship.

Table 7

The total number of students writing the examinations in various technician courses increased by 25%, from 904 in 1996 to 1,127 in 1998, but then declined by 39% to 686 in the year 2000. Between 1998 and 2000 the only increase among the engineering courses was seen in Mechanical Engineering. The total percentage pass rate of 46% in the year 2000 showed slight improvement when compared with earlier periods. The data suggest that a critical review is required in the key subject areas of Civil, Electrical/Electronics, Mechanical and Telecommunication Engineering where the pass rates were below 50%.

Students' Registration at The University of the West Indies

Table 9

Registration of Trinidad and Tobago students in first degree programmes at The University of West Indies increased from 3,470 in 1995/1996 to 4,153 in 1999/2000 – a growth of 20%. Between 1995/1996 and 1999/2000 registration increased in Engineering (39%) and Natural Sciences (20%) but declined in Agricultural Sciences (35%). From a gender perspective, male registration rose by 8% compared with 29% in the case of female. Except for Engineering, female registration out-numbered male in all other faculties.

Table 10

Table 10 shows the new admissions of Trinidad and Tobago nationals in first degrees at The University of the West Indies. Over the period under review, the intake of students rose from 1,091 in 1995/1996 to 1,384 in 1999/2000, representing a 27% increase in new admissions. The Faculties of Natural Sciences, Social Sciences and Humanities together accounted for approximately 60% of new admissions for the academic years as shown.

New admissions into the Faculty of Engineering (15%) and Medical Sciences (7%) remained generally stable while Agricultural Sciences showed a declining trend over the same period. The data also reveal a significant growth of 50% in new admissions in the Faculty of Engineering between 1995/1996 and 1999/2000. Over the 1995/1996 to 1999/2000 period, the admissions of male students increased by 16% which was approximately one half the growth of 34% recorded by their female counterparts.

Table 11

Overall, registration of Trinidad and Tobago nationals in higher degrees at The University of the West Indies rose from 993 in 1995/1996 to 1,269 in 1999/2000, representing a 28% increase. But registration in the 1999/2000 academic year recorded a marginal decline of 3% compared with 1998/1999. The Faculties of Engineering and Social Sciences comprised more than fifty percent (50%) of all students registered at the higher degree level. Natural Sciences accounted for approximately 14% and Agricultural Sciences slightly under 10% of total registration. In the academic year 1999/2000, a larger number of females compared with males was registered in each faculty except in Engineering. Significant growth was observed in female registration between 1995/1996 and 1999/2000 in Natural Sciences (76%) and Engineering (75%).

Table 12

The total number of students admitted to read for higher degrees at The University of West Indies increased by 75% over the period 1995/1996 to 1999/2000. The increasing trend, recorded in post-graduate admissions in Natural Sciences, reflected a growth of 119% over the reference period. Engineering increased by 34% despite fluctuations in student intake as shown. Growth was also seen in Social Sciences (61%). The admission of 117 students to post-graduate programmes in Education in 1999/2000 was significant compared with earlier years.

From 1995/1996 to 1998/1999, the ratio of male to female admissions into higher degree programmes was similar (1:1). In the 1999/2000 academic year, however, as the numerical disparity widened, the male to female ratio became 1:1.5.

Except in the Faculty of Engineering, the data reflect a substantially larger proportion of females in post-graduate studies compared with males in the other faculties.

Graduates from The University of the West Indies

Table 13

Between 1995/1996 and 1997/1998 the total number of graduates declined from 875 to 845 (3%) and then increased to 1,071 (27%) in 1999/2000. The growth in graduates in 1999/2000 compared with 1995/1996 was mainly due to Social Sciences and Education. Over this period graduates in Natural Sciences rose by 15% and by 8% in Engineering.

Of the total graduates in 1999/2000, 19% were in Natural Sciences, 14% in Engineering, 27% in Social Sciences and 18% in Humanities. Compared with 1995/1996, the percentage of Natural Science graduates was similar but the percentage of Engineering graduates decreased by two percentage points in 1999/2000.

Table 14

The number of post-graduates rose from 138 in 1995/1996 to 247 in 1999/2000, representing a 79% increase in the number of higher degree awards over the five-year period.

Overall, the number of females obtaining post-graduate qualification was marginally higher than the males (Table 14b). In terms of faculties, Social Sciences again dominated the higher degree awards, ranging from 27% - 41% of the total graduates for the period shown. Engineering followed, increasing from 17% in 1995/1996 to 25% in 1998/1999 and then declined to 18% in 1999/2000. Less than 10% of the post-graduates was in Agricultural Sciences.

In 1999/2000, approximately one quarter (24%) of the total higher degree awards was observed in Natural Sciences, reflecting a substantial growth compared with earlier years.

Table 15

Trinidad and Tobago post-graduates from the St. Augustine campus of The University of the West Indies doubled from 109 in 1996/1997 to 225 in 1999/2000. The majority of post-graduates was from the Faculties of Social Sciences and Engineering with the addition of Natural Sciences and Education in 1999/2000.

More than 90% of the higher degree awards was at the master's level. The largest number of doctorates was conferred in 1999/2000, consisting of six in Natural Sciences, three in Agricultural Sciences, one in Education and four in Humanities.

Labour Force

Table 16

Table 16 shows the labour force of Trinidad and Tobago by employment status and educational attainment. Between 1996 and 2000 unemployment declined by 4.1 percentage points, from 16.2% to 12.1%. Over this period the labour force increased by 8%. More than one third of the labour force (37%) had primary education and approximately one quarter (25%) attained secondary education but with no O' Level passes. The proportion of the labour force with university education remained polarised at 6%.

Expenditure on Research and Development (R&D)

Table 17

Expenditure on R&D increased by 37%, from \$45.6 million in 1996 to \$62.4 million in 1999. Table 17a shows the public sector as the major source of funding in research activities. From 1996 to 1999, expenditure on R&D was less than one half of one percent of Gross Domestic Product.

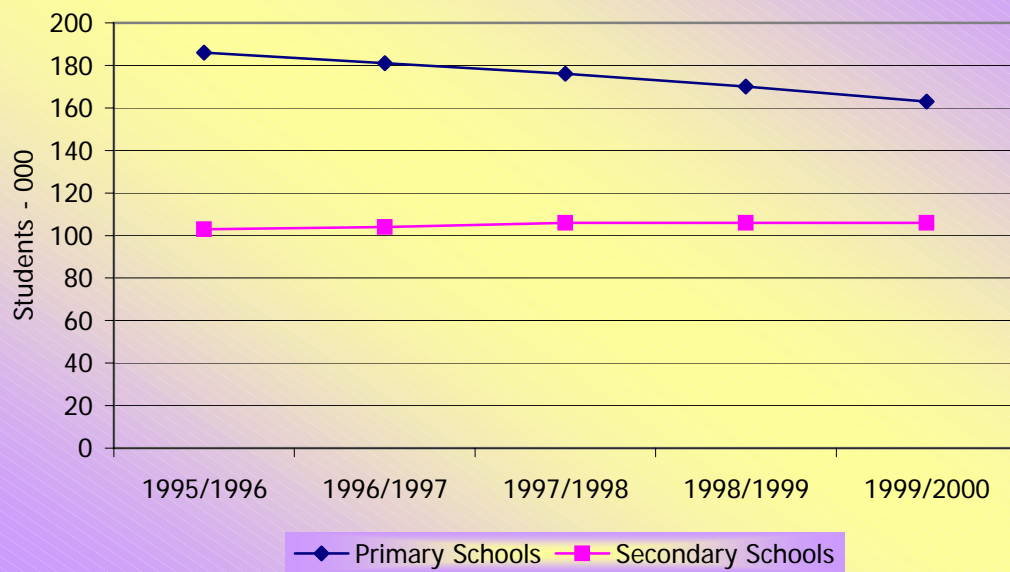
TABLE 1. NUMBER AND ENROLMENT IN PUBLIC EDUCATIONAL INSTITUTIONS
1995/1996 - 1999/2000

Year	Number of Institutions			
	Public Primary Schools	Public Secondary Schools	Technical Schools	University*
	(1)	(2)	(3)	(4)
1995/1996	476	101	3	1
1996/1997	476	101	3	1
1997/1998	477	101	3	1
1998/1999	477	101	3	1
1999/2000	480	101	3	1
	Enrolment in Institutions			
	(5)	(6)	(7)	(8)
1995/1996	185,898	102,878	4,639	4,921
1996/1997	181,003	103,866	4,221	5,477
1997/1998	176,218	106,188	3,935	5,701
1998/1999	169,540	105,994	4,111	5,935
1999/2000	163,206	105,542	3,559	6,147

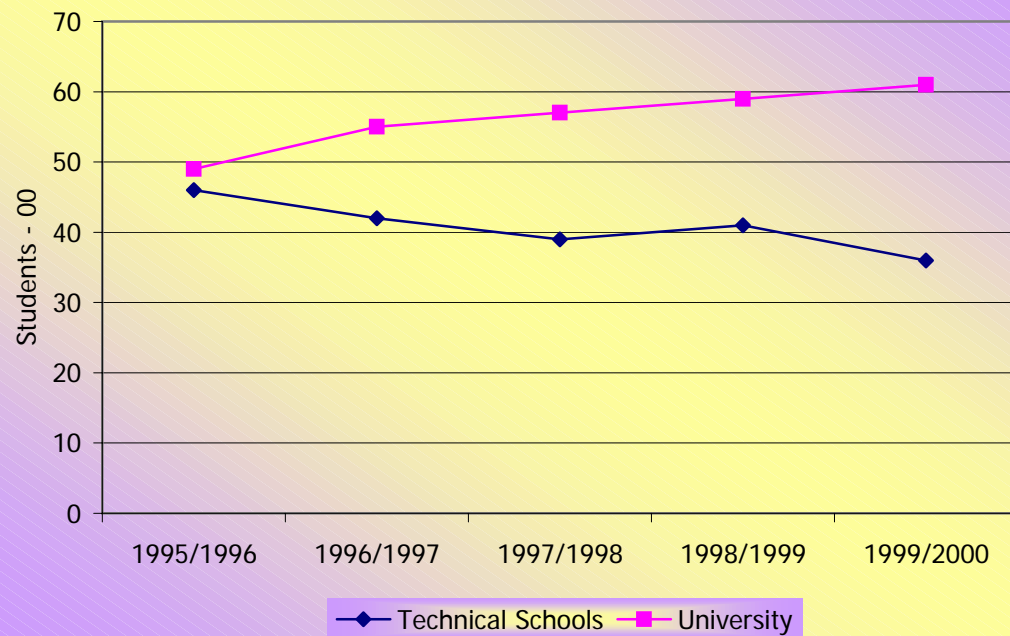
*Enrolment includes Trinidad and Tobago Nationals only

Source: Central Statistical Office

**Chart 1: Enrolment in Primary and Secondary Schools
1995/1996 - 1999/2000**



**Chart 2: Enrolment in Technical Schools and University
1995/1996 - 1999/2000**



Source: Table 1

**TABLE 2. NUMBER OF PUBLIC SECONDARY SCHOOL TEACHERS BY GENDER
QUALIFICATION AND PROFESSIONAL TRAINING
1995/1996 - 1999/2000**

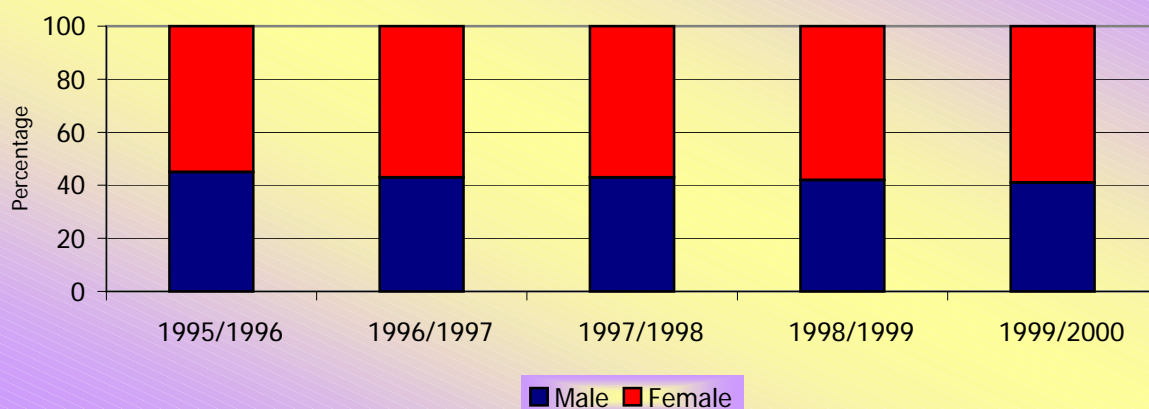
Period	All Teachers									
	Total	Male	Female	With University Degree			Without University Degree			
				Total	Male	Female	Total	Male	Female	
	(1)	(2)	(3)	(4)	(5)	(6)	(7)	(8)	(9)	
1995/1996	4,945	2,205	2,740	3,098	1,224	1,874	1,847	981	866	
1996/1997	4,956	2,120	2,836	3,156	1,199	1,957	1,800	921	879	
1997/1998	5,122	2,186	2,936	3,336	1,268	2,068	1,786	918	868	
1998/1999	5,170	2,170	3,000	3,350	1,260	2,090	1,820	910	910	
1999/2000	5,152	2,116	3,036	3,323	1,208	2,115	1,829	908	921	
	Teachers with University Degree									
	Trained						Untrained			
	Total		Male		Female		Total	Male	Female	
	(10)		(11)		(12)		(13)	(14)	(15)	
	1995/1996		1,565		626		939	1,533	598	935
	1996/1997		1,518		564		954	1,638	635	1,003
	1997/1998		1,405		514		891	1,931	754	1,177
	1998/1999		1,491		540		951	1,859	720	1,139
	1999/2000		1,440		498		942	1,883	710	1,173
	Teachers without University Degree									
(16)		(17)		(18)		(19)	(20)	(21)		
1995/1996		1,188		621		567	659	360	299	
1996/1997		831		394		437	969	527	442	
1997/1998		761		356		405	1,025	562	463	
1998/1999		829		401		428	991	509	482	
1999/2000		934		470		464	895	438	457	

Source: Central Statistical Office

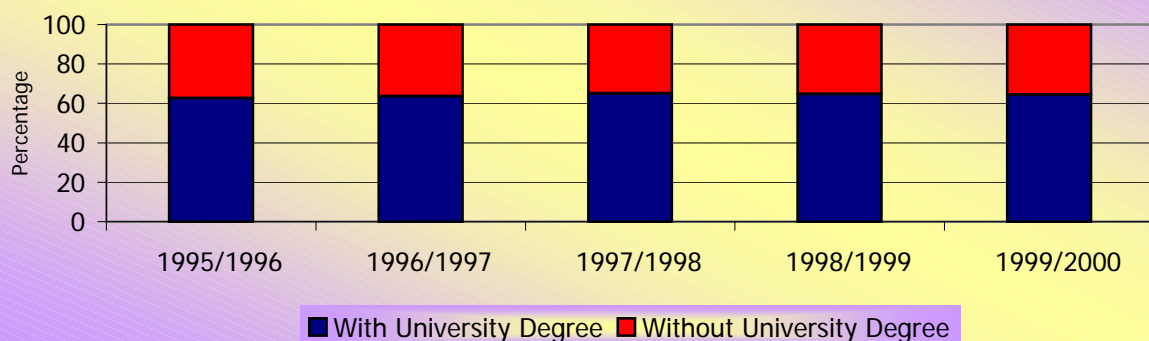
**TABLE 2a. PERCENTAGE OF PUBLIC SECONDARY SCHOOL TEACHERS BY GENDER
QUALIFICATION AND PROFESSIONAL TRAINING
1995/1996 - 1999/2000**

Period	All Teachers									
	Total	Male	Female	With University Degree			Without University Degree			
				Total	Male	Female	Total	Male	Female	
	(1)	(2)	(3)	(4)	(5)	(6)	(7)	(8)	(9)	
1995/1996	100	45	55	100	40	60	100	53	47	
1996/1997	100	43	57	100	38	62	100	51	49	
1997/1998	100	43	57	100	38	62	100	51	49	
1998/1999	100	42	58	100	38	62	100	50	50	
1999/2000	100	41	59	100	36	64	100	50	50	
	Teachers with University Degree									
	Trained						Untrained			
	Total		Male		Female		Total	Male	Female	
	(10)		(11)		(12)		(13)	(14)	(15)	
	1995/1996		100		40		60	100	39	61
	1996/1997		100		37		63	100	39	61
	1997/1998		100		37		63	100	39	61
	1998/1999		100		36		64	100	39	61
	1999/2000		100		35		65	100	38	62
	Teachers without University Degree									
	(16)		(17)		(18)		(19)	(20)	(21)	
	1995/1996		100		52		48	100	55	45
1996/1997		100		47		53	100	54	46	
1997/1998		100		47		53	100	55	45	
1998/1999		100		48		52	100	51	49	
1999/2000		100		50		50	100	49	51	

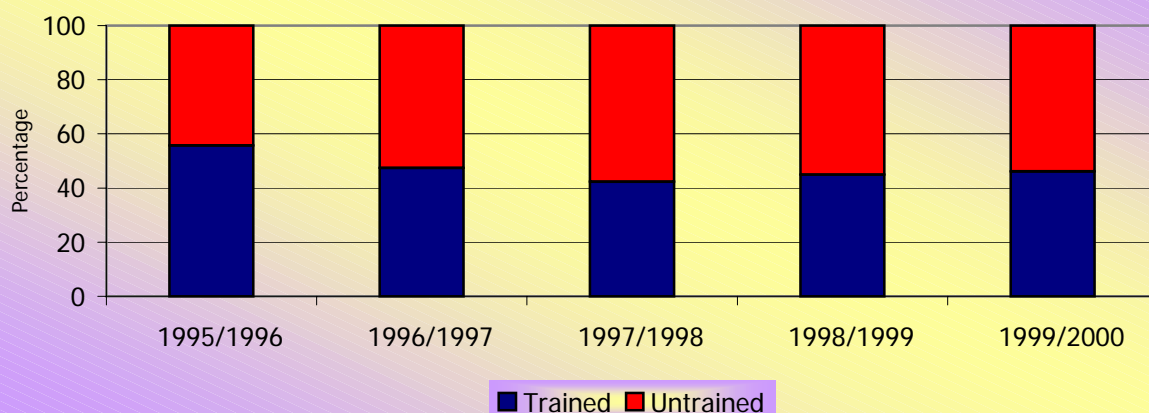
**Chart 3: Percentage of Public Secondary School Teachers by Gender
1995/1996 - 1999/2000**



**Chart 4: Percentage of Public Secondary School Teachers
With and Without University Degree
1995/1996 - 1999/2000**



**Chart 5: Percentage of Trained and Untrained Public Secondary School
Teachers, 1995/1996 - 1999/2000**



Source: Table 2

**TABLE 3. NUMBER OF REGISTERED PROFESSIONALS
1996 - 2000**

Professionals	Period				
	1996	1997	1998	1999	2000
	(1)	(2)	(3)	(4)	(5)
Physicians ¹	957	949	1,185	1,171	1,275
Dentists ¹	142	141	160	189	198
Nurses and Midwives ¹	1,569	1,742	1,916	1,936	1,826
Pharmacists ¹	514	518	530	500	550
Optometrists ¹	54	54	58	62	71
Veterinarians ¹	77	84	101	109	112
Engineers ²	505	564	592	626	655
Architects ³	37	41	51	53	68
Accountants*	462	541	583	593	593

**TABLE 3a. REGISTERED PROFESSIONALS PER HUNDRED THOUSAND POPULATION
1996 - 2000**

Professionals	Period				
	1996	1997	1998	1999	2000
	Per 100 000 Population				
	(1)	(2)	(3)	(4)	(5)
Physicians	76	74	93	91	99
Dentists	11	11	13	15	15
Nurses and Midwives	124	137	150	151	142
Pharmacists	41	41	41	39	43
Optometrists	4	4	5	5	6
Veterinarians	6	7	8	8	9
Engineers	40	44	46	49	51
Architects	3	3	4	4	5
Accountants	37	42	46	46	46

**TABLE 3b. REGISTERED PROFESSIONALS AS A PERCENTAGE OF THE LABOUR FORCE
1996 - 2000**

Professionals	Period				
	1996	1997	1998	1999	2000
	Percentage of Labour Force				
	(1)	(2)	(3)	(4)	(5)
Physicians	0.18	0.18	0.21	0.21	0.22
Dentists	0.03	0.03	0.03	0.03	0.03
Nurses and Midwives	0.30	0.32	0.34	0.34	0.32
Pharmacists	0.10	0.10	0.09	0.09	0.09
Optometrists	0.01	0.01	0.01	0.01	0.01
Veterinarians	0.01	0.02	0.02	0.02	0.02
Engineers	0.10	0.10	0.11	0.11	0.11
Architects	0.01	0.01	0.01	0.01	0.01
Accountants	0.09	0.10	0.10	0.10	0.10

Source: ¹Central Statistical Office

²Board of Engineering

³Board of Architects

*Institute of Chartered Accountants

TABLE 4. C.X.C. GENERAL PROFICIENCY EXAMINATION RESULTS BY SUBJECT
1997 -2000

Subject	1997			1998			1999			2000		
	Number Wrote	Number Passed	Percent-age Passed	Number Wrote	Number Passed	Percent-age Passed	Number Wrote	Number Passed	Percent-age Passed	Number Wrote	Number Passed	Percent-age Passed
	(1)	(2)	(3)	(4)	(5)	(6)	(7)	(8)	(9)	(10)	(11)	(12)
ENGLISH												
English Language	19,910	8,571	43	20,582	11,611	56	20,580	12,610	61	20,805	12,576	60
English Literature	4,401	2,905	66	4,649	3,042	65	4,848	3,012	62	4,930	3,372	68
MATHEMATICS	18,565	5,515	30	19,168	7,085	37	19,548	7,042	36	20,368	9,362	46
SCIENCE												
Agricultural Science	1,231	681	55	1,242	812	65	1,268	985	78	1,325	994	75
Biology	4,814	2,435	51	4,972	2,964	60	5,152	3,080	60	5,184	3,346	65
Chemistry	3,769	1,840	49	3,844	2,171	56	3,865	1,954	51	3,907	2,334	60
Integrated Science	2,883	1,996	69	3,123	2,441	78	3,384	2,705	80	3,375	2,721	81
Physics	3,099	1,475	48	3,260	1,864	57	3,421	1,775	52	3,493	1,935	55
SOCIAL STUDIES												
Caribbean History	3,534	2,209	63	3,532	2,443	69	3,375	2,513	74	3,357	2,343	70
Geography	4,607	3,024	66	4,684	3,389	72	4,702	3,564	76	4,940	3,686	75
Social Studies	7,004	4,067	58	6,962	4,445	64	7,279	4,564	63	7,598	4,362	57
TECHNICAL STUDIES												
Building Technology	34	16	47	77	33	43	68	39	57	82	32	39
Electrical Technology	292	78	27	311	180	58	306	219	72	301	162	54
Electricity/Electronics	315	149	47	283	213	75	395	276	70	368	152	41
Information Technology	364	237	65	328	249	76	834	742	89	1,058	691	65
Mechanical Engineering	141	65	46	137	62	45	145	99	68	135	89	66
Metals	324	148	46	253	147	58	277	122	44	285	181	64
Technical Drawing	1,843	1,192	65	1,995	1,478	74	2,044	1,601	78	2,173	1,633	75
Woods	403	239	59	387	195	50	404	318	79	433	290	67
FOREIGN LANGUAGES												
French	779	535	69	838	663	79	824	691	84	819	701	86
Spanish	3,937	1,913	49	4,093	2,285	56	4,144	2,715	66	4,332	2,978	69

Source: Ministry of Education

Chart 6: Percentage of C.X.C. O'Level Passes in Mathematics and Science, 1997 - 2000

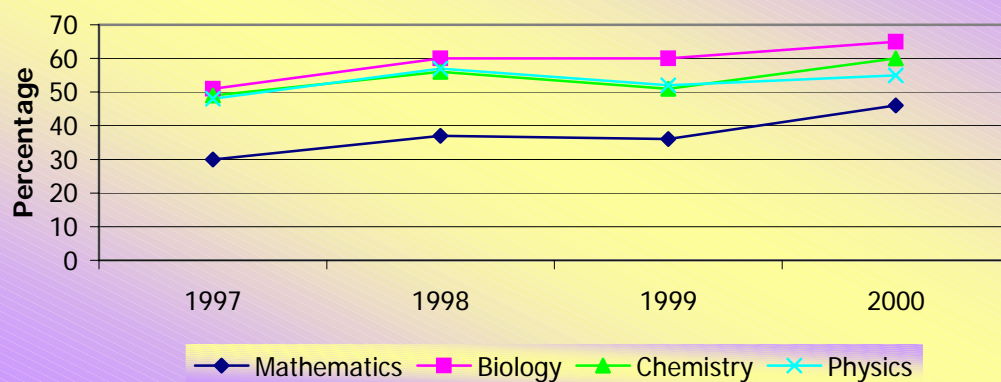


Chart 7: Percentage of C.X.C. O'Level Passes in Technical Studies, 1997 - 2000

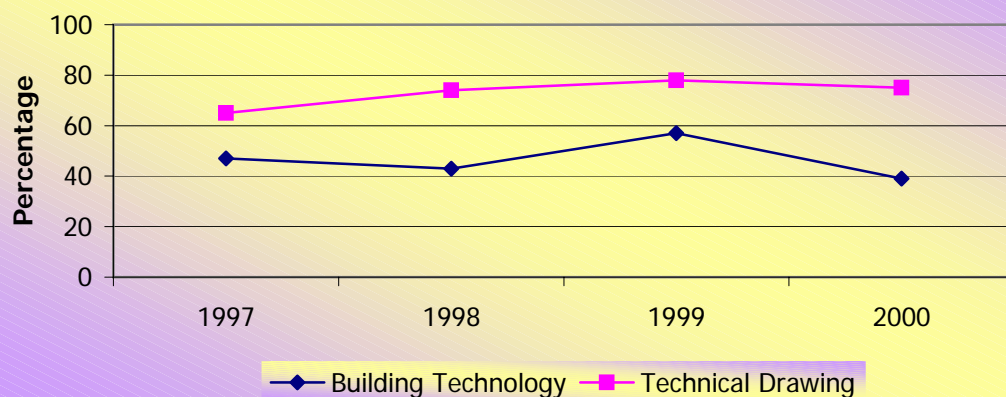
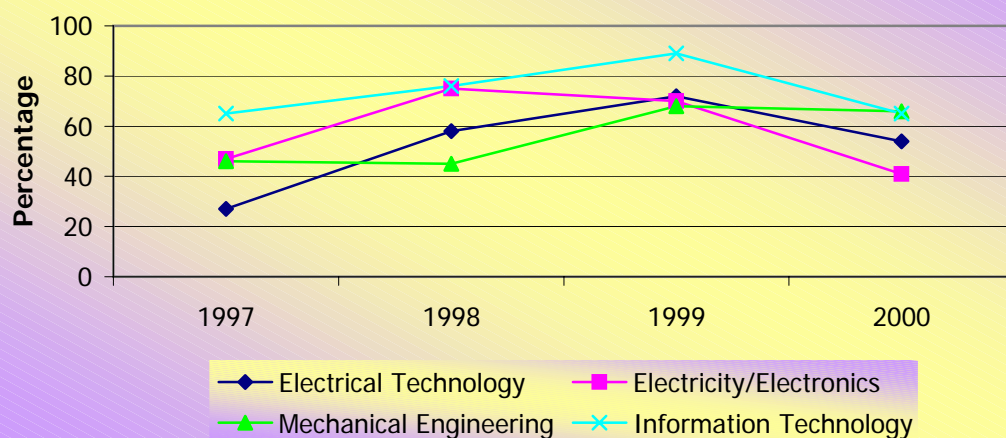


Chart 7a: Percentage of C.X.C. O'Level Passes in Technical Studies, 1997 - 2000



Source: Table 4

TABLE 5. UNIVERSITY OF CAMBRIDGE G.C.E. A' LEVEL EXAMINATION RESULTS BY SUBJECT
1997 - 2000

Subject	1997			1998			1999			2000		
	Number Entered	Number Passed	Percent-age Passed	Number Entered	Number Passed	Percent-age Passed	Number Entered	Number Passed	Percent-age Passed	Number Entered	Number Passed	Percent-age Passed
	(1)	(2)	(3)	(4)	(5)	(6)	(7)	(8)	(9)	(10)	(11)	(12)
ENGLISH												
General Paper	3,491	3,381	97	3,649	3,474	95	3,569	3,363	94	3,698	3,589	97
Literature	529	479	91	637	577	91	590	573	97	649	616	95
MATHEMATICS AND COMPUTING												
Additional Mathematics	2,736	2,118	77	2,871	2,120	74	2,694	2,010	75	2,698	2,001	74
Mathematics	1,419	1,185	84	1,469	1,189	81	1,521	1,247	82	1,504	1,221	81
Further Mathematics	167	138	83	154	130	84	208	186	89	215	166	77
Computing	44	41	93	46	37	80	50	45	90	56	53	95
NATURAL SCIENCES												
Biology	696	523	75	713	562	79	708	574	81	751	582	77
Chemistry	1,006	703	70	999	677	68	964	670	70	984	699	71
Physics	740	530	72	773	604	78	776	646	83	860	672	78
SOCIAL SCIENCES												
Accounting	847	606	72	992	659	66	994	606	61	960	653	68
Economics	1,205	748	62	1,283	685	53	1,287	640	50	1,192	660	55
Geography	541	346	64	598	436	73	575	406	71	577	434	75
History	565	364	64	486	330	68	534	362	68	502	373	74
M.O.B.	931	802	86	1,099	859	78	1,196	907	76	1,274	976	77
Sociology	364	165	45	369	212	57	376	242	64	502	326	65
TECHNICAL STUDIES												
Art and Design	89	65	73	73	47	64	71	57	80	75	53	71
Geometrical and Mechanical Drawing	44	28	64	36	29	81	54	37	69	56	39	70
LANGUAGES												
French	160	143	89	156	136	87	132	120	91	156	146	94
Spanish	275	243	88	279	255	91	306	284	93	314	272	87

Source: Ministry of Education

Chart 8: Percentage of G.C.E. A' Level Examination Passes in Mathematics and Computing 1997 - 2000

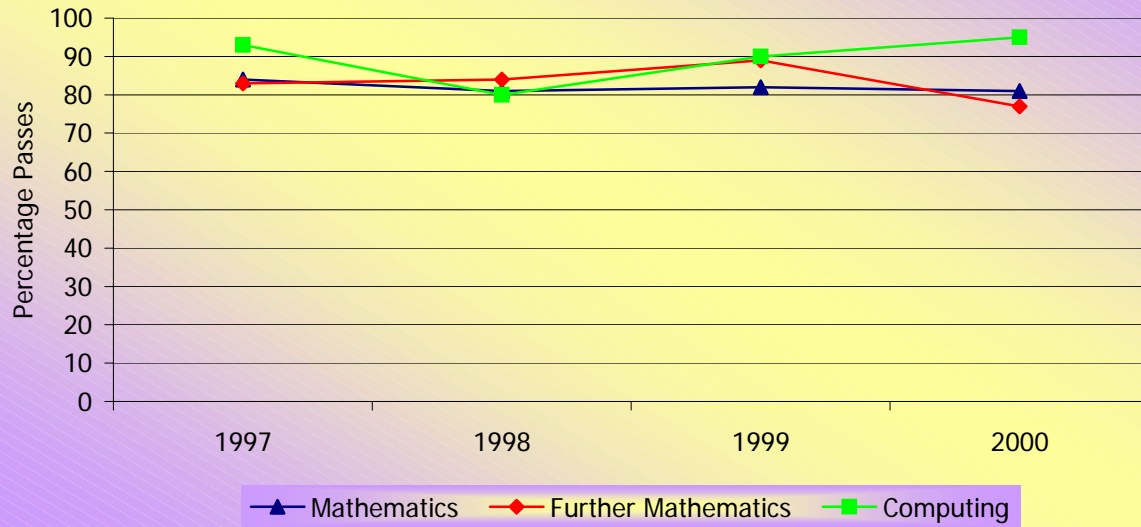
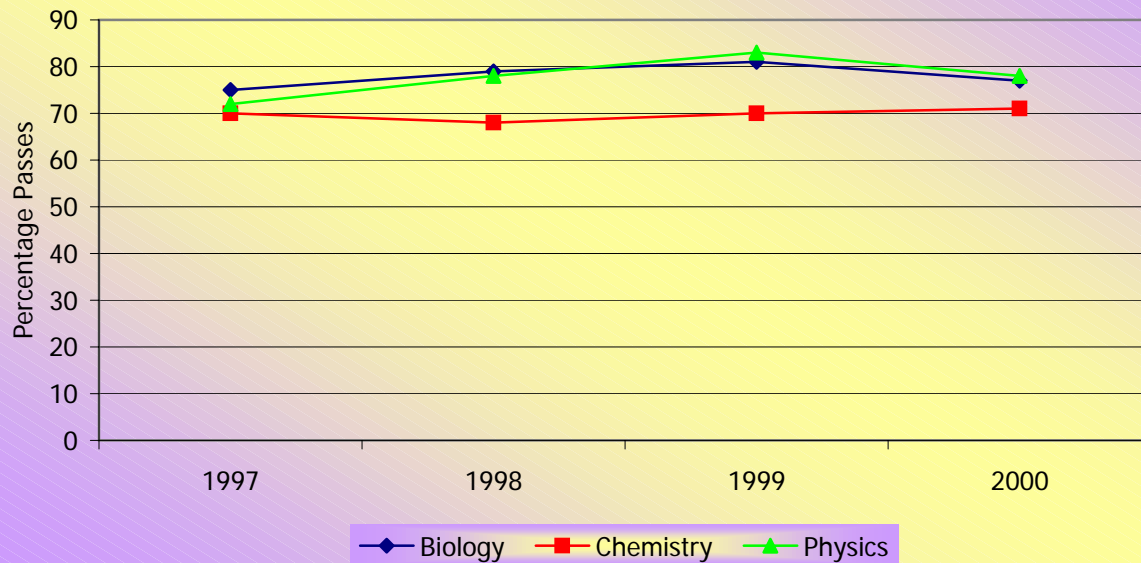


Chart 9: Percentage of G.C.E. A' Level Examination Passes in Natural Sciences 1997 - 2000



Source: Table 5

TABLE 5a. UNIVERSITY OF CAMBRIDGE G.C.E. A' LEVEL EXAMINATION GRADES BY SUBJECT, 2000

Subject	Number Entered	Number Passed	Grade				
			A	B	C	D	E
	(1)	(2)	(3)	(4)	(5)	(6)	(7)
General Paper	3,698	3,589	512	1,607	1,092	204	174
Literature	649	616	25	39	187	246	119
Additional Mathematics	2,698	2,001	438	700	504	205	154
Mathematics	1,504	1,221	450	211	203	184	173
Further Mathematics	215	166	48	30	28	26	34
Computing	56	53	7	11	17	10	8
Biology	751	582	101	120	143	122	96
Chemistry	984	699	136	123	149	151	140
Physics	860	672	124	109	165	147	127
Accounting	960	653	84	127	157	135	150
Economics	1,192	660	66	73	124	183	214
Geography	577	434	76	72	84	105	97
History	502	373	28	40	100	109	96
Management of Business	1,274	976	127	206	205	225	213
Sociology	502	326	23	25	67	103	108
Art and Design	75	53	7	15	9	13	9
Geometrical and Mechanical Drawing	56	39	3	6	5	10	15
French	156	146	16	30	46	30	24
Spanish	314	272	47	59	62	59	45

TABLE 5b. PERCENTAGE DISTRIBUTION OF G.C.E. A' LEVEL EXAMINATION GRADES BY SUBJECT, 2000

Subject	Total	Grade				
		A	B	C	D	E
	(1)	(2)	(3)	(4)	(5)	(6)
General Paper	100	14	45	30	6	5
Literature	100	4	6	30	40	19
Additional Mathematics	100	22	35	25	10	8
Mathematics	100	37	17	17	15	14
Further Mathematics	100	29	18	17	16	20
Computing	100	13	21	32	19	15
Biology	100	17	21	25	21	16
Chemistry	100	19	18	21	22	20
Physics	100	18	16	25	22	19
Accounting	100	13	19	24	21	23
Economics	100	10	11	19	28	32
Geography	100	18	17	19	24	22
History	100	8	11	27	29	26
Management of Business	100	13	21	21	23	22
Sociology	100	7	8	21	32	33
Art and Design	100	13	28	17	25	17
Geometrical and Mechanical Drawing	100	8	15	13	26	38
French	100	11	21	32	21	16
Spanish	100	17	22	23	22	17

**TABLE 6. ENROLMENT IN TECHNICAL AND VOCATIONAL SCHOOLS BY TECHNICIAN
AND CERTIFICATE COURSE AND GENDER
1996/1997 - 2000/2001
(Full-Time and Part-Time)**

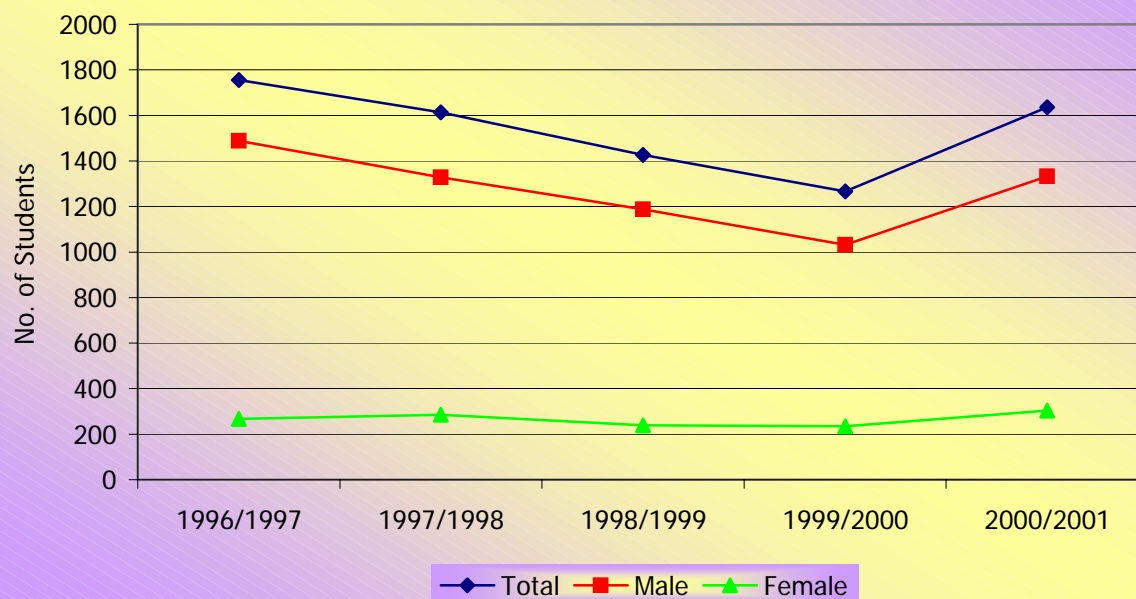
Course	1996/1997			1997/1998			1998/1999		
	Total	Male	Female	Total	Male	Female	Total	Male	Female
	(1)	(2)	(3)	(4)	(5)	(6)	(7)	(8)	(9)
Total	1,756	1,489	267	1,614	1,328	286	1,426	1,187	239
Technician									
Engineering									
Civil Engineering	114	104	10	263	204	59	196	164	32
Construction Engineering	216	179	37
Electrical/Electronic									
Engineering	386	362	24	315	290	25	264	228	36
Environmental Engineering	34	22	12	56	32	24
General Draughtsmanship	195	165	30	151	129	22	94	84	10
Mechanical/Production Engineering	485	465	20	509	478	31	500	463	37
Telecommunication									
Engineering	111	86	25	109	94	15	92	69	23
Industrial Programmes									
Graphic Design	34	23	11	35	22	13	20	15	5
Industrial Instrumentation	15	15	0	45	42	3
Printing	17	8	9	22	11	11	19	11	8
Refrigeration and Air									
Conditioning	26	25	1	26	24	2
Science Laboratory	157	57	100	135	40	95	81	26	55
Higher National Certificate									
Building	41	38	3	59	53	6

**TABLE 6. ENROLMENT IN TECHNICAL AND VOCATIONAL SCHOOLS BY TECHNICIAN
AND CERTIFICATE COURSE AND GENDER, Continued**
1996/1997 - 2000/2001
(Full-Time and Part-Time)

1999/2000			2000/2001			Course
Total	Male	Female	Total	Male	Female	
(10)	(11)	(12)	(13)	(14)	(15)	
1,267	1,032	235	1,636	1,333	303	Total
						Technician
						Engineering
219	185	34	138	106	32	Civil Engineering
...	70	64	6	Construction Engineering
368	326	42	444	388	56	Electrical/Electronic Engineering
63	44	19	29	16	13	Environmental Engineering
20	13	7	37	32	5	General Draughtsmanship
365	315	50	543	475	68	Mechanical/Production Engineering
49	32	17	138	110	28	Telecommunication Engineering
						Industrial Programmes
31	22	9	15	14	1	Graphic Design
24	23	1	51	49	2	Industrial Instrumentation
16	8	8	13	8	5	Printing
...	Refrigeration and Air Conditioning
66	22	44	116	36	80	Science Laboratory
						Higher National Certificate
46	42	4	42	35	7	Building

Source: Central Statistical Office

**Chart 10: Enrolment in Technical and Vocational Schools by Gender
1996/1997 - 2000/2001**



Source: Table 6

**TABLE 7. NATIONAL EXAMINATIONS COUNCIL RESULTS OF TECHNICAL
AND VOCATIONAL SCHOOLS BY COURSE
1996 - 2000**

**TABLE 7. NATIONAL EXAMINATIONS COUNCIL RESULTS OF TECHNICAL
AND VOCATIONAL SCHOOLS BY COURSE
1996 - 2000**

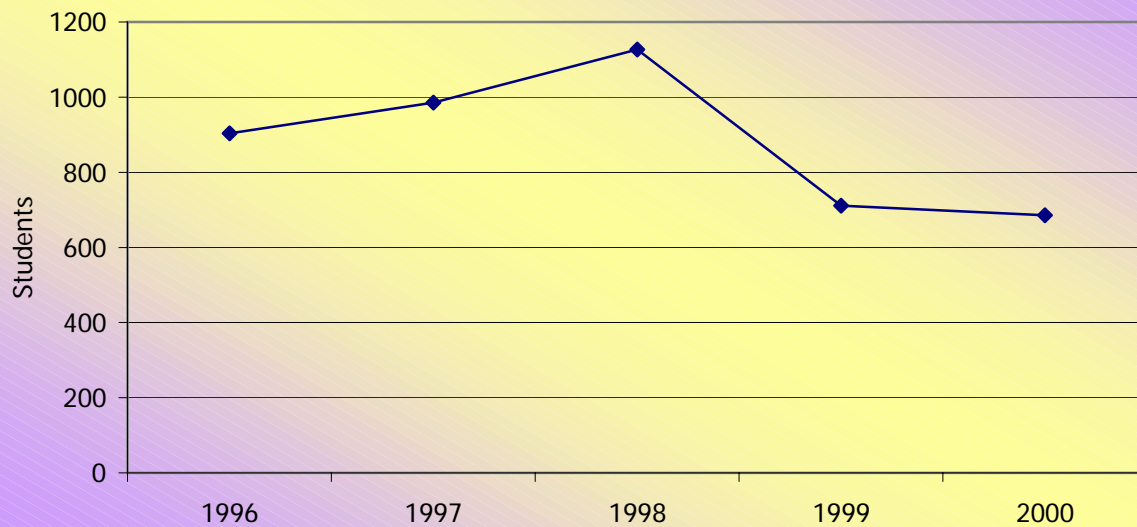
Technician Course	1996			1997			1998		
	Number Wrote	Number Passed	Percent- age Passed	Number Wrote	Number Passed	Percent- age Passed	Number Wrote	Number Passed	Percent- age Passed
	(1)	(2)	(3)	(4)	(5)	(6)	(7)	(8)	(9)
Total	904	406	45	985	322	33	1,127	366	32
Engineering									
Civil Engineering	108	41	38	133	35	26	184	56	30
Electrical/Electronics Engineering	174	62	36	271	80	30	266	79	30
Engineering Surveying	2	1	50
Environmental Engineering
General Draughtsmanship	121	40	33	119	25	21	135	40	30
Industrial Instrumentation	69	52	75	29	22	76	49	20	41
Mechanical Engineering	223	76	34	234	76	32	265	77	29
Production Engineering	8	2	25
Telecommunication Engineering	48	31	64	62	27	44	71	30	42
Industrial Programmes									
Computer Programming	10	6	60	3	2	67
Graphic Design	4	1	25	18	10	56	17	2	12
Library	41	40	98	1	1	100	15	14	93
Printing	1	0	0	17	4	24	8	6	75
Refrigeration and Air Conditioning	7	4	57	4	0	0	1	0	0
Science Laboratory	88	50	57	94	40	42	116	42	36

**TABLE 7. NATIONAL EXAMINATIONS COUNCIL RESULTS OF TECHNICAL
AND VOCATIONAL SCHOOLS BY COURSE, Continued
1996 - 2000**

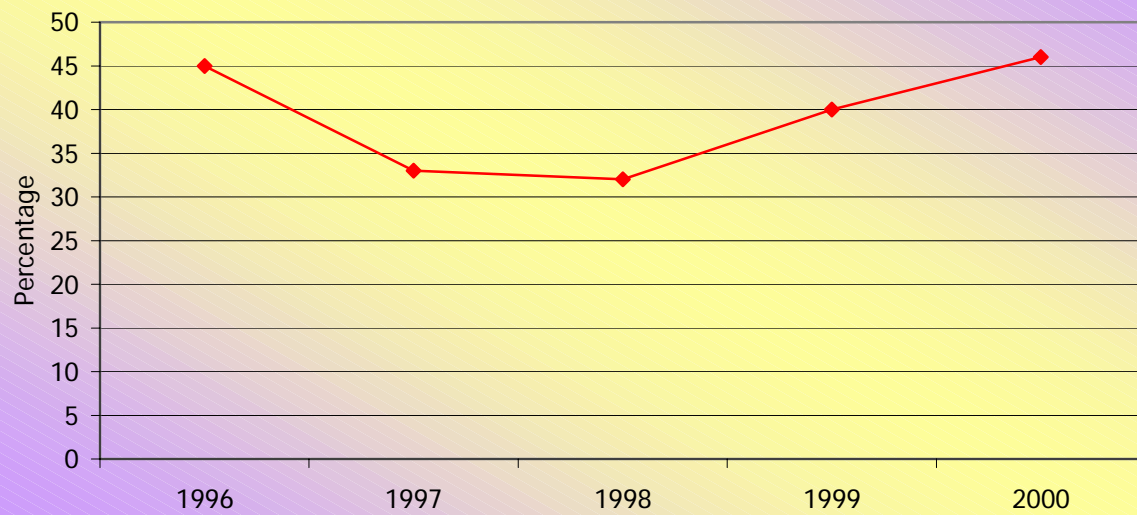
1999			2000			Technician Course
Number Wrote	Number Passed	Percent- age Passed	Number Wrote	Number Passed	Percentage Passed	
(10)	(11)	(12)	(13)	(14)	(15)	
711	286	40	686	313	46	Total
						Engineering
84	25	30	48	17	35	Civil Engineering
76	40	53	100	46	46	Electrical/Electronics Engineering
...	Engineering Surveying
22	20	91	24	20	83	Environmental Engineering
79	28	35	36	22	61	General Draughtsmanship
46	36	78	31	27	87	Industrial Instrumentation
280	69	25	282	85	30	Mechanical Engineering
...	Production Engineering
45	24	53	47	19	40	Telecommunication Engineering
						Industrial Programmes
...	Computer Programming
5	1	20	15	6	40	Graphic Design
...	12	12	100	Library
2	0	0	15	8	53	Printing
1	0	0	1	0	0	Refrigeration and Air Conditioning
71	43	61	75	51	68	Science Laboratory

Source: National Examinations Council
Ministry of Education

**Chart 11: Number of Students Writing the Technician's Examination
1996 - 2000**



**Chart 12: Percentage Passes in the Technician's Examination
1996 - 2000**



Source: Table 7

**TABLE 8. ENROLMENT OF STUDENTS AT THE EASTERN CARIBBEAN INSTITUTE
OF AGRICULTURE AND FORESTRY
1995/1997 - 1999/2001**

Year	Trinidad and Tobago Students			Foreign Students	
	Agriculture	Forestry	Diploma ATEC	Agriculture	Forestry
	(1)	(2)	(3)	(4)	(5)
1995/1997	26	9	...	4	1
1996/1998	17	8	...	3	1
1997/1999	29	12	16	5	6
1998/2000	26	14	12	10	2
1999/2001	24	11	11	6	3

Source: Central Statistical Office

**TABLE 9. REGISTRATION OF TRINIDAD AND TOBAGO STUDENTS IN FIRST DEGREES AT THE
UNIVERSITY OF THE WEST INDIES BY FACULTY AND GENDER
1995/1996 - 1999/2000**

Faculty	1995/1996			1996/1997			1997/1998			
	Total	Male	Female	Total	Male	Female	Total	Male	Female	
	(1)	(2)	(3)	(4)	(5)	(6)	(7)	(8)	(9)	
ALL FACULTIES	3,470	1,499	1,971	3,693	1,550	2,143	3,875	1,597	2,278	
Natural Sciences	670	300	370	718	333	385	770	347	423	
Engineering	502	407	95	542	436	106	590	469	121	
Medical Sciences	434	234	200	455	234	221	443	226	217	
Agricultural Sciences	227	94	133	222	82	140	211	63	148	
Social Sciences	801	260	541	894	279	615	902	284	618	
Education	37	11	26	37	11	26	113	41	72	
Law	114	29	85	103	26	77	101	24	77	
Humanities	685	164	521	722	149	573	745	143	602	
	1998/1999						1999/2000			
	Total		Male		Female		Total	Male	Female	
	(10)		(11)		(12)		(13)	(14)	(15)	
	ALL FACULTIES		4,028		1,578		2,450	4,153	1,619	2,534
	Natural Sciences		807		340		467	805	334	471
Engineering		618		474		144	698	549	149	
Medical Sciences		471		218		253	487	215	272	
Agricultural Sciences		183		48		135	147	36	111	
Social Sciences		905		285		620	960	292	668	
Education		210		67		143	217	51	166	
Law		110		19		91	77	16	61	
Humanities		724		127		597	762	126	636	

Source: The University of the West Indies

TABLE 9a. PERCENTAGE DISTRIBUTION OF TRINIDAD AND TOBAGO STUDENTS REGISTERED IN FIRST DEGREES AT THE UNIVERSITY OF THE WEST INDIES BY FACULTY AND GENDER

1995/1996 - 1999/2000
(Column percentage of Table 9)

Faculty	1995/1996			1996/1997			1997/1998		
	Total	Male	Female	Total	Male	Female	Total	Male	Female
	(1)	(2)	(3)	(4)	(5)	(6)	(7)	(8)	(9)
ALL FACULTIES	100.0	100.0	100.0	100.0	100.0	100.0	100.0	100.0	100.0
Natural Sciences	19.3	20.0	18.8	19.4	21.5	18.0	19.9	21.7	18.6
Engineering	14.5	27.2	4.8	14.7	28.1	4.9	15.2	29.4	5.3
Medical Sciences	12.5	15.6	10.1	12.3	15.1	10.3	11.4	14.2	9.5
Agricultural Sciences	6.5	6.3	6.7	6.0	5.3	6.5	5.4	3.9	6.5
Social Sciences	23.1	17.3	27.4	24.2	18.0	28.7	23.3	17.8	27.1
Education	1.1	0.7	1.3	1.0	0.7	1.2	2.9	2.6	3.2
Law	3.3	1.9	4.3	2.8	1.7	3.6	2.6	1.5	3.4
Humanities	19.7	10.9	26.4	19.6	9.6	26.7	19.2	9.0	26.4
1998/1999							1999/2000		
	Total	Male		Female			Total	Male	Female
	(10)	(11)		(12)			(13)	(14)	(15)
ALL FACULTIES	100.0	100.0		100.0			100.0	100.0	100.0
Natural Sciences		20.0		21.5			19.4	20.6	18.6
Engineering		15.3		30.0			16.8	33.9	5.9
Medical Sciences		11.7		13.8			11.7	13.3	10.7
Agricultural Sciences		4.5		3.0			3.5	2.2	4.4
Social Sciences		22.5		18.1			23.1	18.0	26.4
Education		5.2		4.2			5.2	3.2	6.6
Law		2.7		1.2			1.9	1.0	2.4
Humanities		18.0		8.0			18.3	7.8	25.1

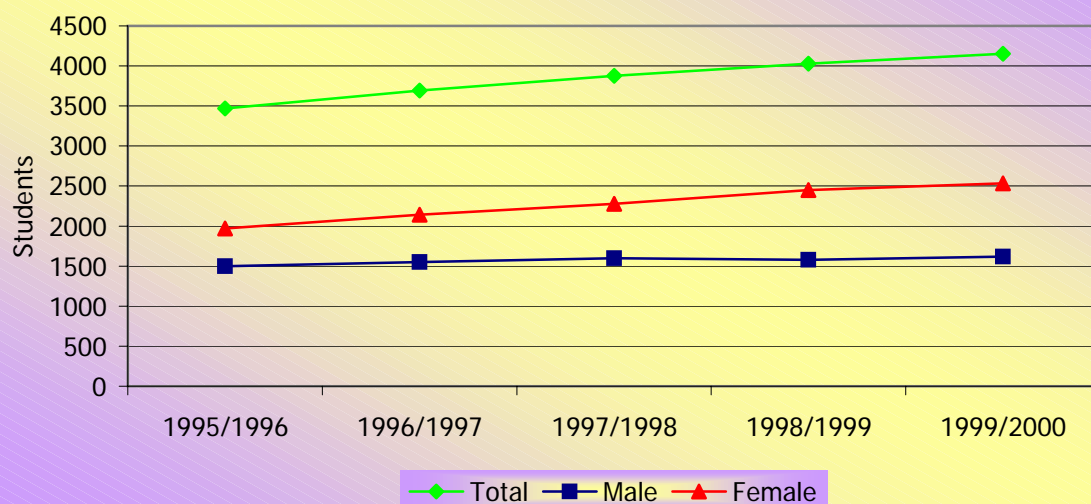
TABLE 9b. PERCENTAGE DISTRIBUTION OF TRINIDAD AND TOBAGO STUDENTS REGISTERED IN FIRST DEGREES AT THE UNIVERSITY OF THE WEST INDIES BY FACULTY AND GENDER

1995/1996 - 1999/2000

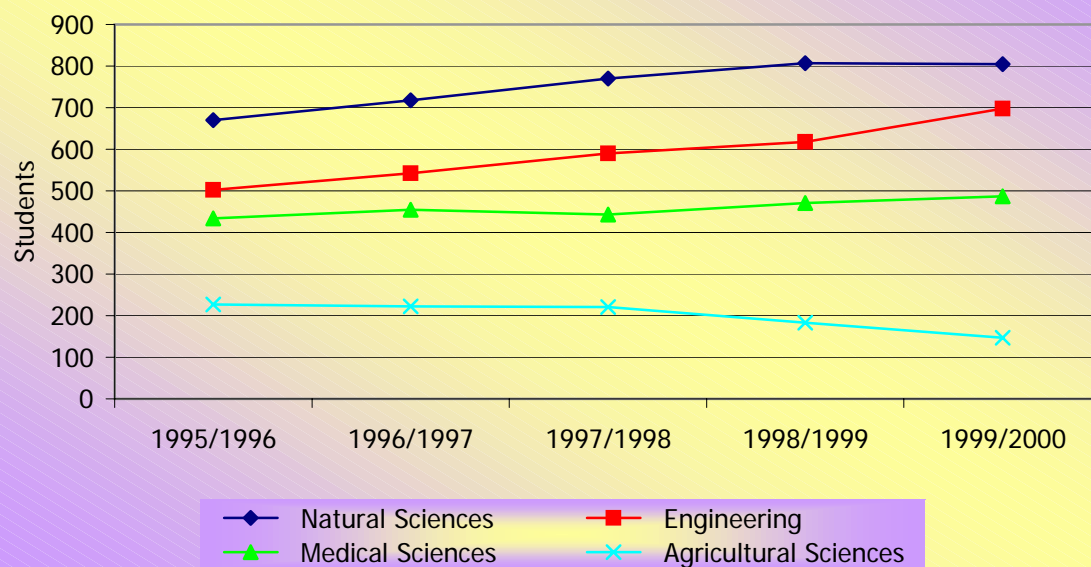
(Row percentage of Table 9)

Faculty	1995/1996			1996/1997			1997/1998			
	Total	Male	Female	Total	Male	Female	Total	Male	Female	
	(1)	(2)	(3)	(4)	(5)	(6)	(7)	(8)	(9)	
ALL FACULTIES	100.0	43.2	56.8	100.0	42.0	58.0	100.0	41.2	58.8	
Natural Sciences	100.0	44.8	55.2	100.0	46.4	53.6	100.0	45.1	54.9	
Engineering	100.0	81.1	18.9	100.0	80.4	19.6	100.0	79.5	20.5	
Medical Sciences	100.0	53.9	46.1	100.0	51.4	48.6	100.0	51.0	49.0	
Agricultural Sciences	100.0	41.4	58.6	100.0	36.9	63.1	100.0	29.9	70.1	
Social Sciences	100.0	32.5	67.5	100.0	31.2	68.8	100.0	31.5	68.5	
Education	100.0	29.7	70.3	100.0	29.7	70.3	100.0	36.3	63.7	
Law	100.0	25.4	74.6	100.0	25.2	74.8	100.0	23.8	76.2	
Humanities	100.0	23.9	76.1	100.0	20.6	79.4	100.0	19.2	80.8	
	1998/1999						1999/2000			
	Total		Male		Female		Total	Male	Female	
	(10)		(11)		(12)		(13)	(14)	(15)	
	ALL FACULTIES		100.0		39.2		60.8	100.0	39.0	61.0
	Natural Sciences		100.0		42.1		57.9	100.0	41.5	58.5
Engineering		100.0		76.7		23.3	100.0	78.7	21.3	
Medical Sciences		100.0		46.3		53.7	100.0	44.1	55.9	
Agricultural Sciences		100.0		26.2		73.8	100.0	24.5	75.5	
Social Sciences		100.0		31.5		68.5	100.0	30.4	69.6	
Education		100.0		31.9		68.1	100.0	23.5	76.5	
Law		100.0		17.3		82.7	100.0	20.8	79.2	
Humanities		100.0		17.5		82.5	100.0	16.5	83.5	

**Chart 13: Total Registration in First Degrees by Gender
1995/1996 - 1999/2000**



**Chart 14: Registration in First Degrees by Faculty
1995/1996 - 1999/2000**



Source: Table 9

**TABLE 10. NEW ADMISSION OF TRINIDAD AND TOBAGO STUDENTS IN FIRST DEGREES AT THE
UNIVERSITY OF THE WEST INDIES BY FACULTY AND GENDER
1995/1996 - 1999/2000**

Faculty	1995/1996			1996/1997			1997/1998		
	Total	Male	Female	Total	Male	Female	Total	Male	Female
	(1)	(2)	(3)	(4)	(5)	(6)	(7)	(8)	(9)
ALL FACULTIES	1,091	437	654	1,300	513	787	1,231	492	739
Natural Sciences	214	94	120	289	137	152	263	113	150
Engineering	151	125	26	179	141	38	188	149	39
Medical Sciences	73	36	37	93	42	51	62	33	29
Agricultural Sciences	77	29	48	80	25	55	79	22	57
Social Sciences	259	79	180	334	111	223	271	80	191
Education	29	10	19	8	1	7	103	39	64
Law	63	19	44	66	15	51	35	9	26
Humanities	225	45	180	251	41	210	230	47	183
1998/1999							1999/2000		
	Total	Male		Female			Total	Male	Female
	(10)	(11)		(12)			(13)	(14)	(15)
ALL FACULTIES	1,281	467		814			1,384	505	879
Natural Sciences	255	110		145			261	109	152
Engineering	197	144		53			227	186	41
Medical Sciences	103	36		67			91	45	46
Agricultural Sciences	37	9		28			31	6	25
Social Sciences	264	76		188			327	92	235
Education	115	32		83			111	23	88
Law	72	15		57			75	9	66
Humanities	238	45		193			261	35	226

Source: The University of the West Indies

**TABLE 10a. PERCENTAGE DISTRIBUTION OF NEW ADMISSION OF TRINIDAD AND TOBAGO STUDENTS IN
FIRST DEGREES AT THE UNIVERSITY OF THE WEST INDIES BY FACULTY AND GENDER**

1995/1996 - 1999/2000

(Column percentage of Table 10)

Faculty	1995/1996			1996/1997			1997/1998		
	Total	Male	Female	Total	Male	Female	Total	Male	Female
	(1)	(2)	(3)	(4)	(5)	(6)	(7)	(8)	(9)
ALL FACULTIES	100.0	100.0	100.0	100.0	100.0	100.0	100.0	100.0	100.0
Natural Sciences	19.6	21.5	18.3	22.2	26.7	19.3	21.4	23.0	20.3
Engineering	13.8	28.6	4.0	13.8	27.5	4.8	15.3	30.3	5.3
Medical Sciences	6.7	8.2	5.7	7.2	8.2	6.5	5.0	6.7	3.9
Agricultural Sciences	7.1	6.6	7.3	6.2	4.9	7.0	6.4	4.5	7.7
Social Sciences	23.7	18.1	27.5	25.7	21.6	28.3	22.0	16.3	25.8
Education	2.7	2.3	2.9	0.6	0.2	0.9	8.4	7.9	8.7
Law	5.8	4.3	6.7	5.1	2.9	6.5	2.8	1.8	3.5
Humanities	20.6	10.3	27.5	19.3	8.0	26.7	18.7	9.6	24.8
	1998/1999						1999/2000		
	Total		Male		Female		Total	Male	Female
	(10)		(11)		(12)		(13)	(14)	(15)
	ALL FACULTIES		100.0		100.0		100.0	100.0	100.0
	Natural Sciences		19.9		23.6		17.8	18.9	17.3
Engineering		15.4		30.8		6.5	16.4	4.7	
Medical Sciences		8.0		7.7		8.2	6.6	5.2	
Agricultural Sciences		2.9		1.9		3.4	2.2	2.8	
Social Sciences		20.6		16.3		23.1	23.6	26.7	
Education		9.0		6.9		10.2	8.0	10.0	
Law		5.6		3.2		7.0	5.4	7.5	
Humanities		18.6		9.6		23.7	18.9	25.7	

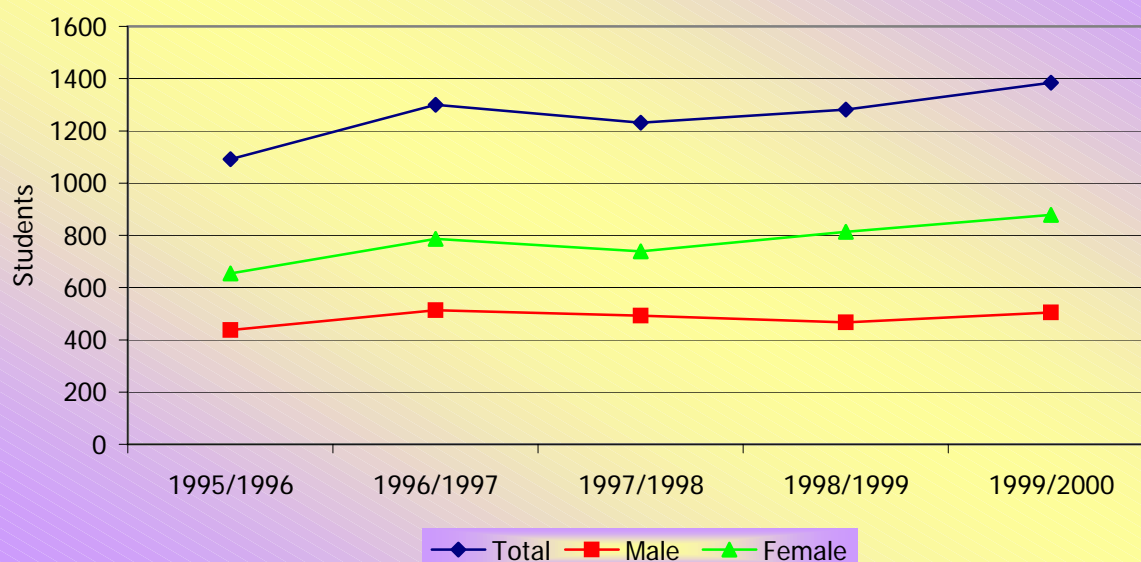
**TABLE 10b. PERCENTAGE DISTRIBUTION OF NEW ADMISSION OF TRINIDAD AND TOBAGO STUDENTS IN
FIRST DEGREES AT THE UNIVERSITY OF THE WEST INDIES BY FACULTY AND GENDER**

1995/1996 - 1999/2000

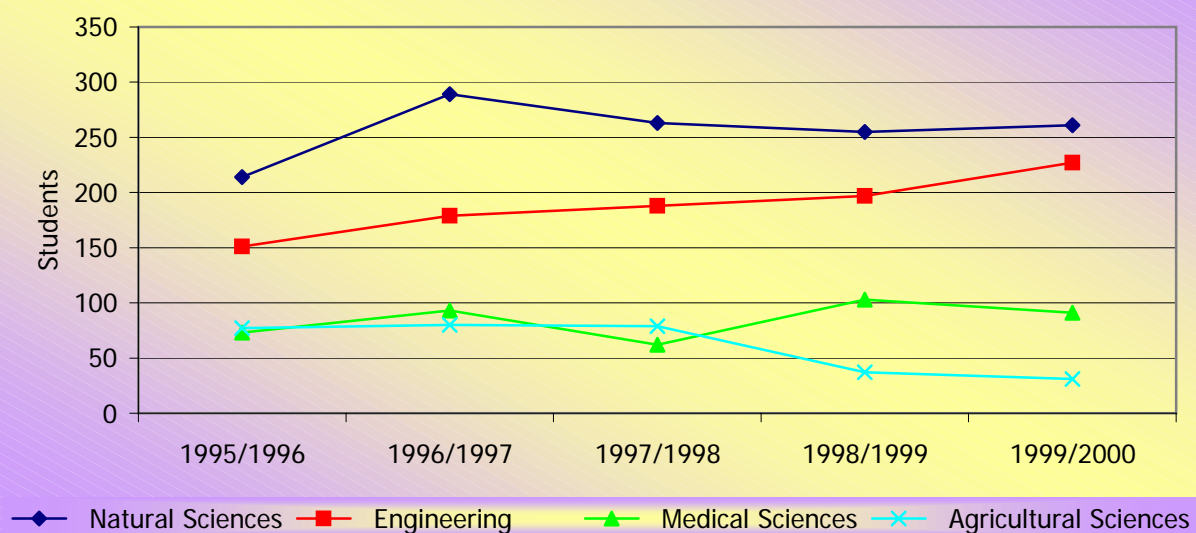
(Row percentage of Table 10)

Faculty	1995/1996			1996/1997			1997/1998		
	Total	Male	Female	Total	Male	Female	Total	Male	Female
	(1)	(2)	(3)	(4)	(5)	(6)	(7)	(8)	(9)
ALL FACULTIES	100.0	40.1	59.9	100.0	39.5	60.5	100.0	40.0	60.0
Natural Sciences	100.0	43.9	56.1	100.0	47.4	52.6	100.0	43.0	57.0
Engineering	100.0	82.8	17.2	100.0	78.8	21.2	100.0	79.3	20.7
Medical Sciences	100.0	49.3	50.7	100.0	45.2	54.8	100.0	53.2	46.8
Agricultural Sciences	100.0	37.7	62.3	100.0	31.3	68.8	100.0	27.8	72.2
Social Sciences	100.0	30.5	69.5	100.0	33.2	66.8	100.0	29.5	70.5
Education	100.0	34.5	65.5	100.0	12.5	87.5	100.0	37.9	62.1
Law	100.0	30.2	69.8	100.0	22.7	77.3	100.0	25.7	74.3
Humanities	100.0	20.0	80.0	100.0	16.3	83.7	100.0	20.4	79.6
	1998/1999						1999/2000		
	Total		Male		Female		Total	Male	Female
	(10)		(11)		(12)		(13)	(14)	(15)
	ALL FACULTIES		100.0		36.5		63.5	100.0	36.5
Natural Sciences	100.0		43.1		56.9		100.0	41.8	58.2
Engineering	100.0		73.1		26.9		100.0	81.9	18.1
Medical Sciences	100.0		35.0		65.0		100.0	49.5	50.5
Agricultural Sciences	100.0		24.3		75.7		100.0	19.4	80.6
Social Sciences	100.0		28.8		71.2		100.0	28.1	71.9
Education	100.0		27.8		72.2		100.0	20.7	79.3
Law	100.0		20.8		79.2		100.0	12.0	88.0
Humanities	100.0		18.9		81.1		100.0	13.4	86.6

**Chart 15: New Admission in First Degrees by Gender
1995/1996 - 1999/2000**



**Chart 16: New Admission in First Degrees by Faculty
1995/1996 - 1999/2000**



Source: Table 10

**TABLE 11. REGISTRATION OF TRINIDAD AND TOBAGO STUDENTS IN HIGHER DEGREES AT THE
UNIVERSITY OF THE WEST INDIES BY FACULTY AND GENDER
1995/1996 - 1999/2000**

Faculty	1995/1996			1996/1997			1997/1998		
	Total	Male	Female	Total	Male	Female	Total	Male	Female
	(1)	(2)	(3)	(4)	(5)	(6)	(7)	(8)	(9)
ALL FACULTIES	993	507	486	1,187	597	590	1,262	634	628
Natural Sciences	137	74	63	155	78	77	182	79	103
Engineering	245	174	71	298	196	102	336	224	112
Medical Sciences	51	26	25	54	31	23	59	33	26
Agricultural Sciences	94	50	44	116	63	54	104	63	41
Social Sciences	291	137	154	351	169	182	360	169	191
Education	105	29	76	127	35	92	136	44	92
Law	5	1	4	1	1	0	4	0	4
Humanities	65	16	49	85	24	61	81	22	59
1998/1999							1999/2000		
	Total	Male		Female			Total	Male	Female
	(10)	(11)		(12)			(13)	(14)	(15)
ALL FACULTIES		1,307		647		660	1,269	594	675
Natural Sciences		195		89		106	194	83	111
Engineering		358		239		119	350	226	124
Medical Sciences		58		32		26	44	20	24
Agricultural Sciences		117		62		55	108	50	58
Social Sciences		357		159		198	358	154	204
Education		128		41		87	123	38	85
Law		5		2		3	0	0	0
Humanities		89		23		66	92	23	69

Source: The University of the West Indies

TABLE 11a. PERCENTAGE DISTRIBUTION OF TRINIDAD AND TOBAGO STUDENTS REGISTERED IN HIGHER DEGREES AT THE UNIVERSITY OF THE WEST INDIES BY FACULTY AND GENDER

1995/1996 - 1999/2000

(Column percentage of Table 11)

Faculty	1995/1996			1996/1997			1997/1998		
	Total	Male	Female	Total	Male	Female	Total	Male	Female
	(1)	(2)	(3)	(4)	(5)	(6)	(7)	(8)	(9)
ALL FACULTIES	100.0	100.0	100.0	100.0	100.0	100.0	100.0	100.0	100.0
Natural Sciences	13.8	14.6	13.0	13.1	13.1	13.1	14.4	12.5	16.4
Engineering	24.7	34.3	14.6	25.1	32.8	17.3	26.6	35.3	17.8
Medical Sciences	5.1	5.1	5.1	4.5	5.2	3.9	4.7	5.2	4.1
Agricultural Sciences	9.5	9.9	9.1	9.8	10.6	9.2	8.2	9.9	6.5
Social Sciences	29.3	27.0	31.7	29.6	28.3	30.8	28.5	26.7	30.4
Education	10.6	5.7	15.6	10.7	5.9	15.6	10.8	6.9	14.6
Law	0.5	0.2	0.8	0.1	0.2	0.0	0.3	0.0	0.6
Humanities	6.5	3.2	10.1	7.2	4.0	10.3	6.4	3.5	9.4
1998/1999							1999/2000		
	Total	Male		Female			Total	Male	Female
	(10)	(11)		(12)			(13)	(14)	(15)
ALL FACULTIES	100.0	100.0		100.0			100.0	100.0	100.0
Natural Sciences	14.9	13.8		16.1			15.3	14.0	16.4
Engineering	27.4	36.9		18.0			27.6	38.0	18.4
Medical Sciences	4.4	4.9		3.9			3.5	3.4	3.6
Agricultural Sciences	9.0	9.6		8.3			8.5	8.4	8.6
Social Sciences	27.3	24.6		30.0			28.2	25.9	30.2
Education	9.8	6.3		13.2			9.7	6.4	12.6
Law	0.4	0.3		0.5			0.0	0.0	0.0
Humanities	6.8	3.6		10.0			7.2	3.9	10.2

TABLE 11b. PERCENTAGE DISTRIBUTION OF TRINIDAD AND TOBAGO STUDENTS REGISTERED IN HIGHER DEGREES AT THE UNIVERSITY OF THE WEST INDIES BY FACULTY AND GENDER

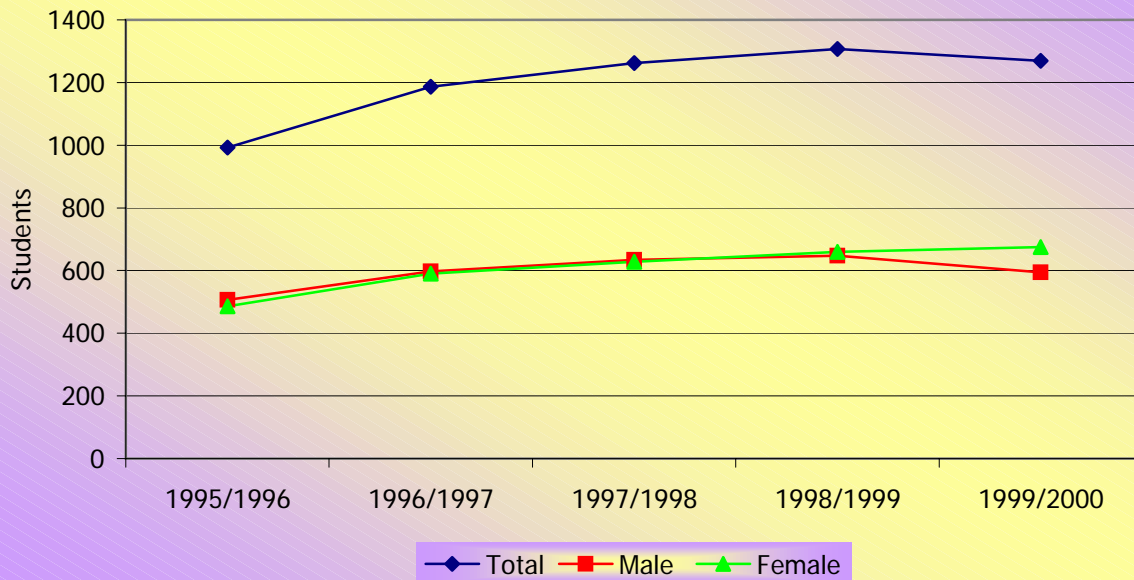
1995/1996 - 1999/2000

(Row percentage of Table 11)

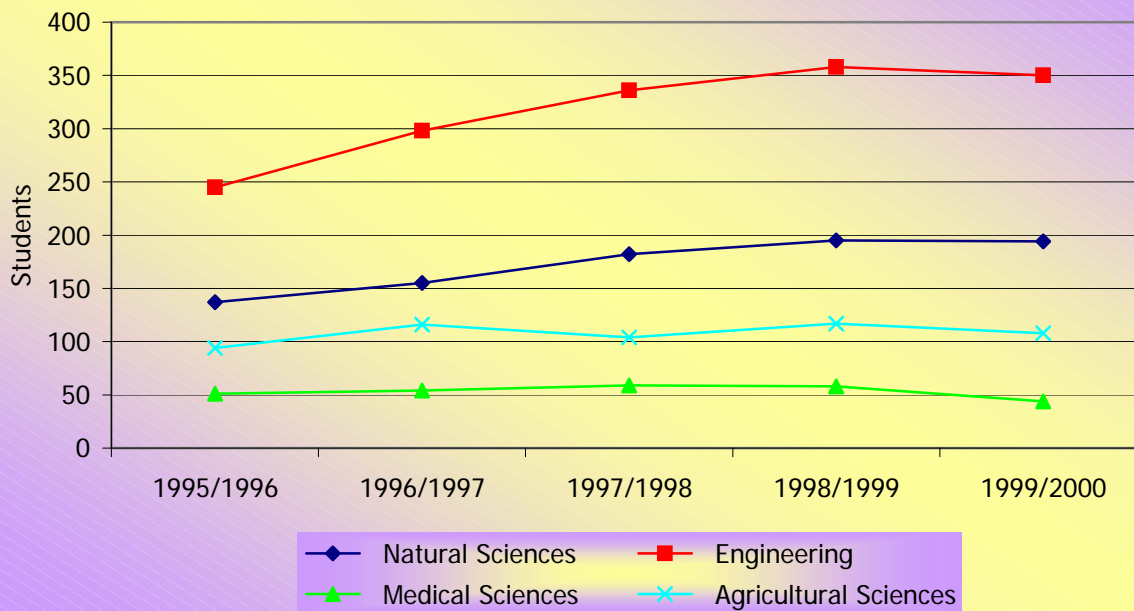
(Row percentage of Table 11)

Faculty	1995/1996			1996/1997			1997/1998		
	Total	Male	Female	Total	Male	Female	Total	Male	Female
	(1)	(2)	(3)	(4)	(5)	(6)	(7)	(8)	(9)
ALL FACULTIES	100.0	51.1	48.9	100.0	50.3	49.7	100.0	50.2	49.8
Natural Sciences	100.0	54.0	46.0	100.0	50.3	49.7	100.0	43.4	56.6
Engineering	100.0	71.0	29.0	100.0	65.8	34.2	100.0	66.7	33.3
Medical Sciences	100.0	51.0	49.0	100.0	57.4	42.6	100.0	55.9	44.1
Agricultural Sciences	100.0	53.2	46.8	100.9	54.3	46.6	100.0	60.6	39.4
Social Sciences	100.0	47.1	52.9	100.0	48.1	51.9	100.0	46.9	53.1
Education	100.0	27.6	72.4	100.0	27.6	72.4	100.0	32.4	67.6
Law	100.0	20.0	80.0	100.0	100.0	0.0	100.0	0.0	100.0
Humanities	100.0	24.6	75.4	100.0	28.2	71.8	100.0	27.2	72.8
	1998/1999						1999/2000		
	Total		Male		Female		Total	Male	Female
	(10)		(11)		(12)		(13)	(14)	(15)
ALL FACULTIES	100.0		49.5		50.5		100.0	46.8	53.2
Natural Sciences	100.0		45.6		54.4		100.0	42.8	57.2
Engineering	100.0		66.8		33.2		100.0	64.6	35.4
Medical Sciences	100.0		55.2		44.8		100.0	45.5	54.5
Agricultural Sciences	100.0		53.0		47.0		100.0	46.3	53.7
Social Sciences	100.0		44.5		55.5		100.0	43.0	57.0
Education	100.0		32.0		68.0		100.0	30.9	69.1
Law	100.0		40.0		60.0		0.0	0.0	0.0
Humanities	100.0		25.8		74.2		100.0	25.0	75.0

**Chart 17: Registration in Higher Degrees by Gender
1995/1996 - 1999/2000**



**Chart 18: Registration in Higher Degrees by Faculty
1995/1996 - 1999/2000**



Source: Table 11

**TABLE 12. NEW ADMISSION OF TRINIDAD AND TOBAGO STUDENTS IN HIGHER DEGREES AT THE
UNIVERSITY OF THE WEST INDIES BY FACULTY AND GENDER
1995/1996 - 1999/2000**

Faculty	1995/1996			1996/1997			1997/1998				
	Total	Male	Female	Total	Male	Female	Total	Male	Female		
	(1)	(2)	(3)	(4)	(5)	(6)	(7)	(8)	(9)		
ALL FACULTIES	326	169	157	404	192	212	351	181	170		
Natural Sciences	36	18	18	36	17	19	53	22	31		
Engineering	82	55	27	105	66	39	103	72	31		
Medical Sciences	17	9	8	23	13	10	12	4	8		
Agricultural Sciences	34	18	16	34	16	18	23	17	6		
Social Sciences	109	53	56	126	59	67	113	49	64		
Education	29	10	19	43	11	32	21	11	10		
Law	3	1	2	0	0	0	4	0	4		
Humanities	16	5	11	37	10	27	22	6	16		
	1998/1999						1999/2000				
	Total		Male		Female		Total	Male	Female		
	(10)		(11)		(12)		(13)	(14)	(15)		
	ALL FACULTIES		424		199		225		572	228	344
	Natural Sciences		63		29		34		79	27	52
Engineering		113		77		36		110	73	37	
Medical Sciences		19		10		9		19	7	12	
Agricultural Sciences		36		15		21		25	11	14	
Social Sciences		140		52		88		176	66	110	
Education		26		6		20		117	32	85	
Law		2		1		1		0	0	0	
Humanities		25		9		16		46	12	34	

Source: The University of the West Indies

TABLE 12a. PERCENTAGE DISTRIBUTION OF NEW ADMISSION OF TRINIDAD AND TOBAGO STUDENTS IN HIGHER DEGREES AT THE UNIVERSITY OF THE WEST INDIES BY FACULTY AND GENDER

1995/1996 - 1999/2000

(Column percentage of Table 12)

Faculty	1995/1996			1996/1997			1997/1998		
	Total	Male	Female	Total	Male	Female	Total	Male	Female
	(1)	(2)	(3)	(4)	(5)	(6)	(7)	(8)	(9)
ALL FACULTIES	100.0	100.0	100.0	100.0	100.0	100.0	100.0	100.0	100.0
Natural Sciences	11.0	10.7	11.5	8.9	8.9	9.0	15.1	12.2	18.2
Engineering	25.2	32.5	17.2	26.0	34.4	18.4	29.3	39.8	18.2
Medical Sciences	5.2	5.3	5.1	5.7	6.8	4.7	3.4	2.2	4.7
Agricultural Sciences	10.4	10.7	10.2	8.4	8.3	8.5	6.6	9.4	3.5
Social Sciences	33.4	31.4	35.7	31.2	30.7	31.6	32.2	27.1	37.6
Education	8.9	5.9	12.1	10.6	5.7	15.1	6.0	6.1	5.9
Law	0.9	0.6	1.3	0.0	0.0	0.0	1.1	0.0	2.4
Humanities	4.9	3.0	7.0	9.2	5.2	12.7	6.3	3.3	9.4
	1998/1999						1999/2000		
	Total		Male		Female		Total	Male	Female
	(10)		(11)		(12)		(13)	(14)	(15)
ALL FACULTIES	100.0		100.0		100.0		100.0	100.0	100.0
Natural Sciences	14.9		14.6		15.1		13.8	11.8	15.1
Engineering	26.7		38.7		16.0		19.2	32.0	10.8
Medical Sciences	4.5		5.0		4.0		3.3	3.1	3.5
Agricultural Sciences	8.5		7.5		9.3		4.4	4.8	4.1
Social Sciences	33.0		26.1		39.1		30.8	28.9	32.0
Education	6.1		3.0		8.9		20.5	14.0	24.7
Law	0.5		0.5		0.4		0.0	0.0	0.0
Humanities	5.9		4.5		7.1		8.0	5.3	9.9

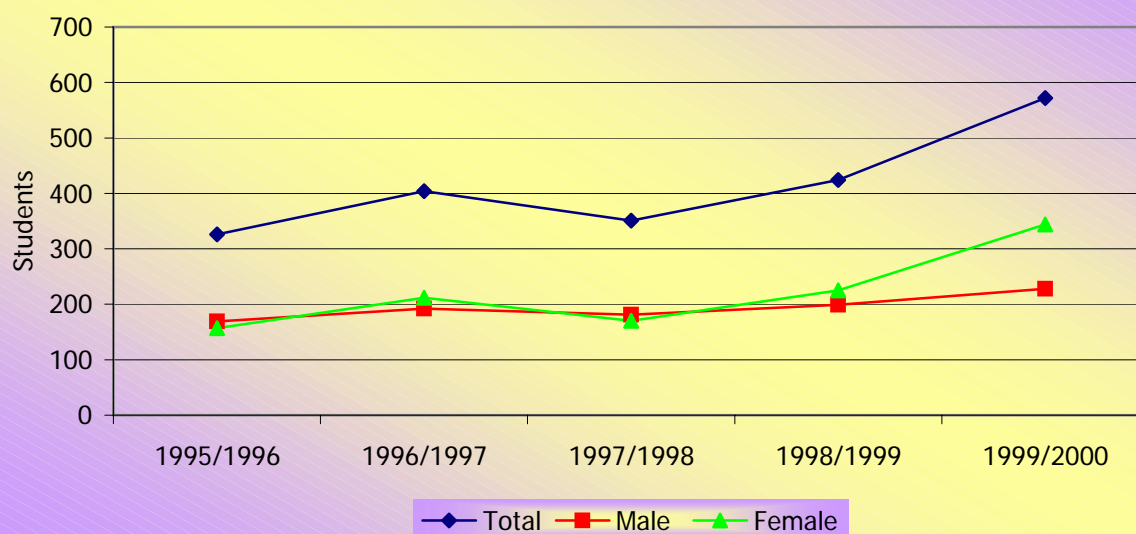
TABLE 12b. PERCENTAGE DISTRIBUTION OF NEW ADMISSION OF TRINIDAD AND TOBAGO STUDENTS IN HIGHER DEGREES AT THE UNIVERSITY OF THE WEST INDIES BY FACULTY AND GENDER

1995/1996 - 1999/2000

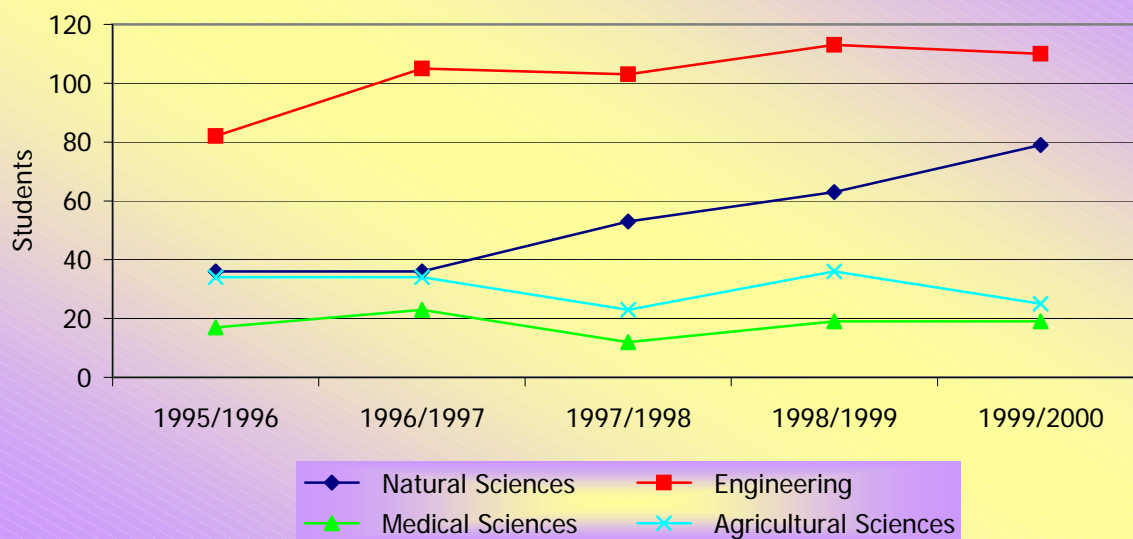
(Row percentage of Table 12)

Faculty	1995/1996			1996/1997			1997/1998		
	Total	Male	Female	Total	Male	Female	Total	Male	Female
	(1)	(2)	(3)	(4)	(5)	(6)	(7)	(8)	(9)
ALL FACULTIES	100.0	51.8	48.2	100.0	47.5	52.5	100.0	51.6	48.4
Natural Sciences	100.0	50.0	50.0	100.0	47.2	52.8	100.0	41.5	58.5
Engineering	100.0	67.1	32.9	100.0	62.9	37.1	100.0	69.9	30.1
Medical Sciences	100.0	52.9	47.1	100.0	56.5	43.5	100.0	33.3	66.7
Agricultural Sciences	100.0	52.9	47.1	100.0	47.1	52.9	100.0	73.9	26.1
Social Sciences	100.0	48.6	51.4	100.0	46.8	53.2	100.0	43.4	56.6
Education	100.0	34.5	65.5	100.0	25.6	74.4	100.0	52.4	47.6
Law	100.0	33.3	66.7	0.0	0.0	0.0	100.0	0.0	100.0
Humanities	100.0	31.3	68.8	100.0	27.0	73.0	100.0	27.3	72.7
1998/1999							1999/2000		
	Total	Male		Female			Total	Male	Female
	(10)	(11)		(12)			(13)	(14)	(15)
ALL FACULTIES	100.0	46.9		53.1			100.0	39.9	60.1
Natural Sciences	100.0	46.0		54.0			100.0	34.2	65.8
Engineering	100.0	68.1		31.9			100.0	66.4	33.6
Medical Sciences	100.0	52.6		47.4			100.0	36.8	63.2
Agricultural Sciences	100.0	41.7		58.3			100.0	44.0	56.0
Social Sciences	100.0	37.1		62.9			100.0	37.5	62.5
Education	100.0	23.1		76.9			100.0	27.4	72.6
Law	100.0	50.0		50.0			0.0	0.0	0.0
Humanities	100.0	36.0		64.0			100.0	26.1	73.9

**Chart 19: New Admission in Higher Degrees by Gender
1995/1996 - 1999/2000**



**Chart 20: New Admission in Higher Degrees by Faculty
1995/1996 - 1999/2000**



Source: Table 12

**TABLE 13. TRINIDAD AND TOBAGO GRADUATES FROM THE UNIVERSITY OF THE
WEST INDIES BY FACULTY AND GENDER
1995/1996 - 1999/2000**

(First Degree Awards)

Faculty	1995/1996			1996/1997			1997/1998		
	Total	Male	Female	Total	Male	Female	Total	Male	Female
	(1)	(2)	(3)	(4)	(5)	(6)	(7)	(8)	(9)
ALL FACULTIES	875	382	493	858	337	521	845	334	511
Natural Sciences	175	73	102	148	55	93	134	58	76
Engineering	142	108	34	121	97	24	125	98	27
Medical Sciences	83	47	36	87	46	41	80	42	38
Agricultural Sciences	50	23	27	51	20	31	39	15	24
Social Sciences	215	74	141	227	59	168	242	61	181
Education	8	1	7	26	9	17	8	1	7
Law	40	9	31	46	9	37	37	11	26
Humanities	162	47	115	152	42	110	180	48	132
1998/1999							1999/2000		
	Total	Male		Female			Total	Male	Female
	(10)	(11)		(12)			(13)	(14)	(15)
ALL FACULTIES		1,037		379		658	1,071	413	658
Natural Sciences		194		66		128	202	76	126
Engineering		140		103		37	154	125	29
Medical Sciences		88		46		42	83	41	42
Agricultural Sciences		40		10		30	56	13	43
Social Sciences		273		89		184	288	92	196
Education		103		38		65	67	17	50
Law		34		4		30	34	9	25
Humanities		165		23		142	187	40	147

Source: The University of the West Indies

**TABLE 13a. PERCENTAGE DISTRIBUTION OF TRINIDAD AND TOBAGO GRADUATES FROM THE
UNIVERSITY OF THE WEST INDIES BY FACULTY AND GENDER
1995/1996 - 1999/2000**

(First Degree Awards)

(Column percentage of Table 13)

Faculty	1995/1996			1996/1997			1997/1998		
	Total	Male	Female	Total	Male	Female	Total	Male	Female
	(1)	(2)	(3)	(4)	(5)	(6)	(7)	(8)	(9)
ALL FACULTIES	100.0	100.0	100.0	100.0	100.0	100.0	100.0	100.0	100.0
Natural Sciences	20.0	19.1	20.7	17.2	16.3	17.9	15.9	17.4	14.9
Engineering	16.2	28.3	6.9	14.1	28.8	4.6	14.8	29.3	5.3
Medical Sciences	9.5	12.3	7.3	10.1	13.6	7.9	9.5	12.6	7.4
Agricultural Sciences	5.7	6.0	5.5	5.9	5.9	6.0	4.6	4.5	4.7
Social Sciences	24.6	19.4	28.6	26.5	17.5	32.2	28.6	18.3	35.4
Education	0.9	0.3	1.4	3.0	2.7	3.3	0.9	0.3	1.4
Law	4.6	2.4	6.3	5.4	2.7	7.1	4.4	3.3	5.1
Humanities	18.5	12.3	23.3	17.7	12.5	21.1	21.3	14.4	25.8
1998/1999							1999/2000		
	Total	Male		Female			Total	Male	Female
	(10)	(11)		(12)			(13)	(14)	(15)
ALL FACULTIES	100.0	100.0		100.0			100.0	100.0	100.0
Natural Sciences	18.7	17.4		19.5			18.9	18.4	19.1
Engineering	13.5	27.2		5.6			14.4	30.3	4.4
Medical Sciences	8.5	12.1		6.4			7.7	9.9	6.4
Agricultural Sciences	3.9	2.6		4.6			5.2	3.1	6.5
Social Sciences	26.3	23.5		28.0			26.9	22.3	29.8
Education	9.9	10.0		9.9			6.3	4.1	7.6
Law	3.3	1.1		4.6			3.2	2.2	3.8
Humanities	15.9	6.1		21.6			17.5	9.7	22.3

**TABLE 13b. PERCENTAGE DISTRIBUTION OF TRINIDAD AND TOBAGO GRADUATES FROM THE
UNIVERSITY OF THE WEST INDIES BY FACULTY AND GENDER**

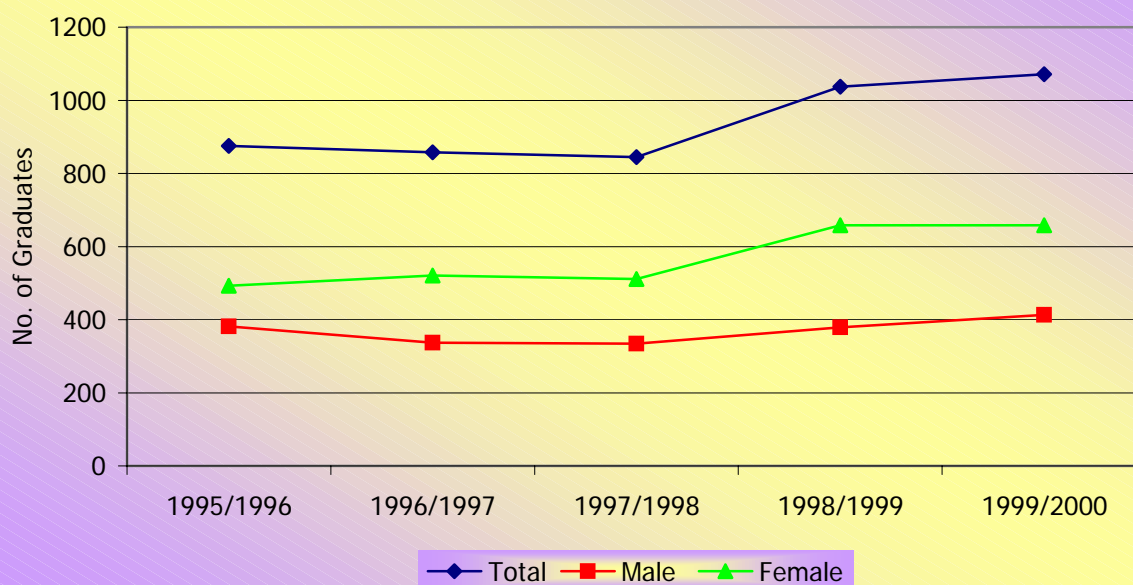
1995/1996 - 1999/2000

(First Degree Awards)

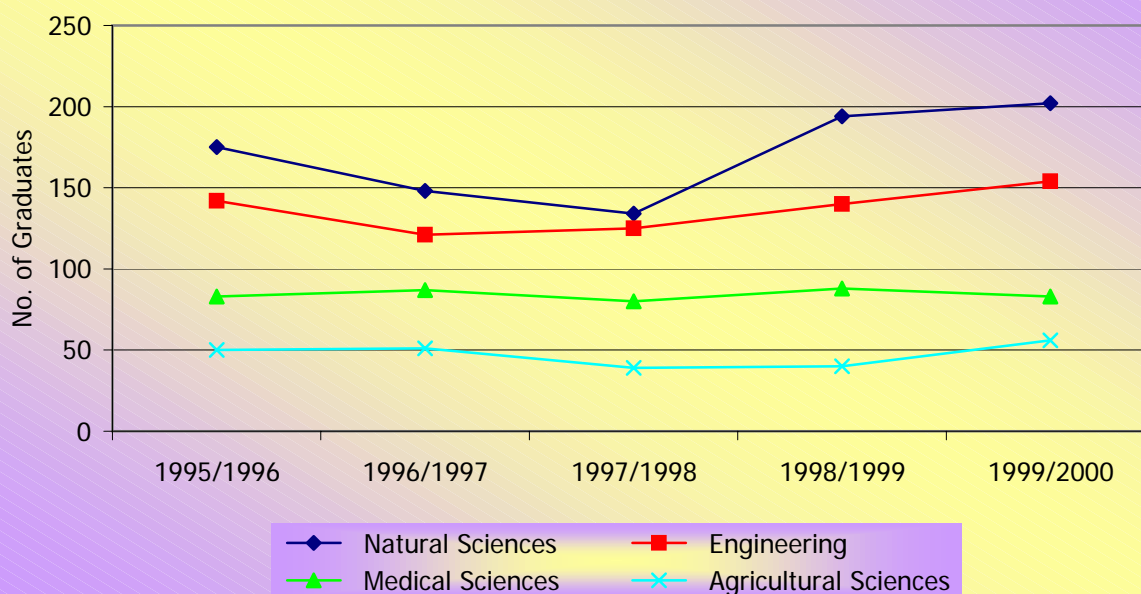
(Row percentage of Table 13)

(Row percentage of Table 13)									
Faculty	1995/1996			1996/1997			1997/1998		
	Total	Male	Female	Total	Male	Female	Total	Male	Female
	(1)	(2)	(3)	(4)	(5)	(6)	(7)	(8)	(9)
ALL FACULTIES	100.0	43.7	56.3	100.0	39.3	60.7	100.0	39.5	60.5
Natural Sciences	100.0	41.7	58.3	100.0	37.2	62.8	100.0	43.3	56.7
Engineering	100.0	76.1	23.9	100.0	80.2	19.8	100.0	78.4	21.6
Medical Sciences	100.0	56.6	43.4	100.0	52.9	47.1	100.0	52.5	47.5
Agricultural Sciences	100.0	46.0	54.0	100.0	39.2	60.8	100.0	38.5	61.5
Social Sciences	100.0	34.4	65.6	100.0	26.0	74.0	100.0	25.2	74.8
Education	100.0	12.5	87.5	100.0	34.6	65.4	100.0	12.5	87.5
Law	100.0	22.5	77.5	100.0	19.6	80.4	100.0	29.7	70.3
Humanities	100.0	29.0	71.0	100.0	27.6	72.4	100.0	26.7	73.3
	1998/1999						1999/2000		
	Total		Male		Female		Total	Male	Female
	(10)		(11)		(12)		(13)	(14)	(15)
ALL FACULTIES	100.0		36.5		63.5		100.0	38.6	61.4
Natural Sciences	100.0		34.0		66.0		100.0	37.6	62.4
Engineering	100.0		73.6		26.4		100.0	81.2	18.8
Medical Sciences	100.0		52.3		47.7		100.0	49.4	50.6
Agricultural Sciences	100.0		25.0		75.0		100.0	23.2	76.8
Social Sciences	100.0		32.6		67.4		100.0	31.9	68.1
Education	100.0		36.9		63.1		100.0	25.4	74.6
Law	100.0		11.8		88.2		100.0	26.5	73.5
Humanities	100.0		13.9		86.1		100.0	21.4	78.6

**Chart 21: Graduates in First Degrees by Gender
1995/1996 - 1999/2000**



**Chart 22: Graduates in First Degrees by Faculty
1995/1996 - 1999/2000**



Source: Table 13

**TABLE 14. TRINIDAD AND TOBAGO POST - GRADUATES FROM THE UNIVERSITY
OF THE WEST INDIES BY FACULTY AND GENDER
1995/1996 - 1999/2000
(Higher Degree Awards)**

(Higher Degree Awards)									
Faculty	1995/1996			1996/1997			1997/1998		
	Total	Male	Female	Total	Male	Female	Total	Male	Female
	(1)	(2)	(3)	(4)	(5)	(6)	(7)	(8)	(9)
ALL FACULTIES	138	66	72	146	68	78	198	96	102
Natural Sciences	21	11	10	14	9	5	28	12	16
Engineering	23	18	5	26	18	8	47	31	16
Medical Sciences	18	8	10	21	9	12	7	3	4
Agricultural Sciences	12	2	10	7	5	2	11	7	4
Social Sciences	50	25	25	60	25	35	79	37	42
Education	4	1	3	6	0	6	15	2	13
Law	1	0	1	3	0	3	4	2	2
Humanities	9	1	8	9	2	7	7	2	5
	1998/1999						1999/2000		
	Total		Male		Female		Total	Male	Female
	(10)		(11)		(12)		(13)	(14)	(15)
ALL FACULTIES	249		128		121		247	118	129
Natural Sciences	23		11		12		58	23	35
Engineering	62		42		20		44	32	12
Medical Sciences	9		4		5		7	4	3
Agricultural Sciences	21		14		7		19	8	11
Social Sciences	89		42		47		67	36	31
Education	23		9		14		37	10	27
Law	2		0		2		0	0	0
Humanities	20		6		14		15	5	10

Source: The University of the West Indies

**TABLE 14a. PERCENTAGE DISTRIBUTION OF TRINIDAD AND TOBAGO POST- GRADUATES FROM
THE UNIVERSITY OF THE WEST INDIES BY FACULTY AND GENDER
1995/1996 - 1999/2000
(Higher Degree Awards)
(Column percentage of Table 14)**

Faculty	1995/1996			1996/1997			1997/1998		
	Total	Male	Female	Total	Male	Female	Total	Male	Female
	(1)	(2)	(3)	(4)	(5)	(6)	(7)	(8)	(9)
ALL FACULTIES	100.0	100.0	100.0	100	100.0	100	100.0	100.0	100.0
Natural Sciences	15.2	16.7	13.9	9.6	13.2	6.4	14.1	12.5	15.7
Engineering	16.7	27.3	6.9	17.8	26.5	10.3	23.7	32.3	15.7
Medical Sciences	13.0	12.1	13.9	14.4	13.2	15.4	3.5	3.1	3.9
Agricultural Sciences	8.7	3.0	13.9	4.8	7.4	2.6	5.6	7.3	3.9
Social Sciences	36.2	37.9	34.7	41.1	36.8	44.9	39.9	38.5	41.2
Education	2.9	1.5	4.2	4.1	0.0	7.7	7.6	2.1	12.7
Law	0.7	0.0	1.4	2.1	0.0	3.8	2.0	2.1	2.0
Humanities	6.5	1.5	11.1	6.2	2.9	9.0	3.5	2.1	4.9
1998/1999							1999/2000		
	Total	Male		Female			Total	Male	Female
	(10)	(11)		(12)			(13)	(14)	(15)
ALL FACULTIES	100.0	100.0		100.0			100.0	100.0	100.0
Natural Sciences	9.2	8.6		9.9			23.5	19.5	27.1
Engineering	24.9	32.8		16.5			17.8	27.1	9.3
Medical Sciences	3.6	3.1		4.1			2.8	3.4	2.3
Agricultural Sciences	8.4	10.9		5.8			7.7	6.8	8.5
Social Sciences	35.7	32.8		38.8			27.1	30.5	24.0
Education	9.2	7.0		11.6			15.0	8.5	20.9
Law	0.8	0.0		1.7			0.0	0.0	0.0
Humanities	8.0	4.7		11.6			6.1	4.2	7.8

**TABLE 14b. PERCENTAGE DISTRIBUTION OF TRINIDAD AND TOBAGO POST - GRADUATES FROM
THE UNIVERSITY OF THE WEST INDIES BY FACULTY AND GENDER**

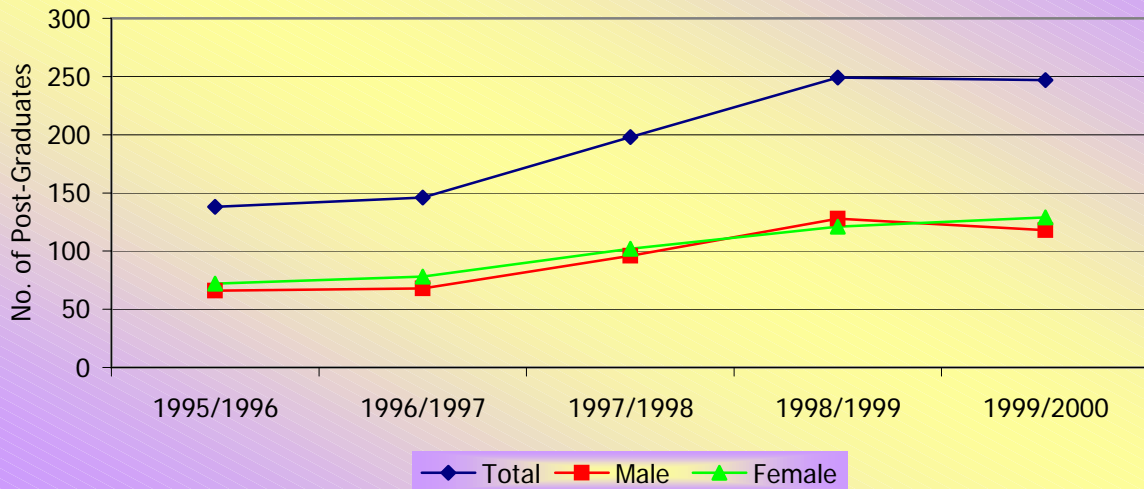
1995/1996 - 1999/2000

(Higher Degree Awards)

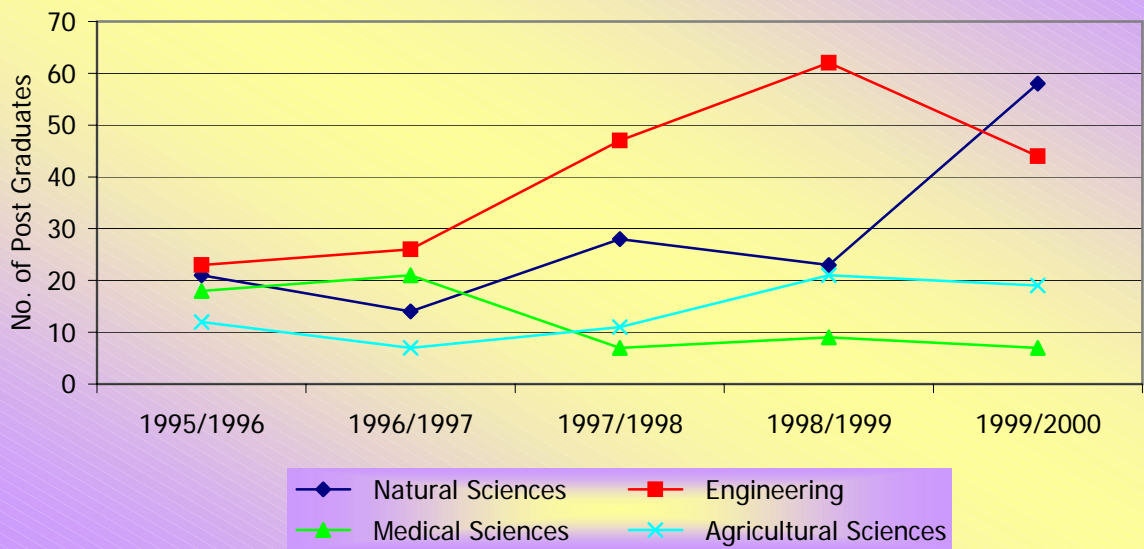
(Row percentage of Table 14)

Faculty	1995/1996			1996/1997			1997/1998		
	Total (1)	Male (2)	Female (3)	Total (4)	Male (5)	Female (6)	Total (7)	Male (8)	Female (9)
ALL FACULTIES	100.0	47.8	52.2	100.0	46.6	53.4	100.0	48.5	51.5
Natural Sciences	100.0	52.4	47.6	100.0	64.3	35.7	100.0	42.9	57.1
Engineering	100.0	78.3	21.7	100.0	69.2	30.8	100.0	66.0	34.0
Medical Sciences	100.0	44.4	55.6	100.0	42.9	57.1	100.0	42.9	57.1
Agricultural Sciences	100.0	16.7	83.3	100.0	71.4	28.6	100.0	63.6	36.4
Social Sciences	100.0	50.0	50.0	100.0	41.7	58.3	100.0	46.8	53.2
Education	100.0	25.0	75.0	100.0	0.0	100.0	100.0	13.3	86.7
Law	100.0	0.0	100.0	100.0	0.0	100.0	100.0	50.0	50.0
Humanities	100.0	11.1	88.9	100.0	22.2	77.8	100.0	28.6	71.4
1998/1999							1999/2000		
	Total (10)	Male (11)		Female (12)		Total (13)	Male (14)	Female (15)	
ALL FACULTIES	100.0	51.4		48.6		100.0	47.8	52.2	
Natural Sciences	100.0	47.8		52.2		100.0	39.7	60.3	
Engineering	100.0	67.7		32.3		100.0	72.7	27.3	
Medical Sciences	100.0	44.4		55.6		100.0	57.1	42.9	
Agricultural Sciences	100.0	66.7		33.3		100.0	42.1	57.9	
Social Sciences	100.0	47.2		52.8		100.0	53.7	46.3	
Education	100.0	39.1		60.9		100.0	27.0	73.0	
Law	100.0	0.0		100.0		0.0	0.0	0.0	
Humanities	100.0	30.0		70.0		100.0	33.3	66.7	

**Chart 23: Post-Graduates by Gender
1995/1996 - 1999/2000**



**Chart 24: Post-Graduates by Faculty
1995/1996 - 1999/2000**



Source: Table 14

TABLE 15. TRINIDAD AND TOBAGO POST - GRADUATES FROM THE UNIVERSITY OF THE WEST INDIES BY FACULTY, QUALIFICATION AND GENDER
1996/1997 - 1999/2000
(St. Augustine Campus Only)

Faculty	1996/1997			1997/1998			1998/1999			1999/2000		
	Total	Male	Female	Total	Male	Female	Total	Male	Female	Total	Male	Female
	(1)	(2)	(3)	(4)	(5)	(6)	(7)	(8)	(9)	(10)	(11)	(12)
ALL FACULTIES	109	59	50	177	95	82	231	126	105	225	113	112
Natural Sciences	13	9	4	22	12	10	19	9	10	53	22	31
M.Sc.	3	2	1	13	8	5	6	3	3	37	13	24
M.Phil.	9	6	3	5	3	2	11	4	7	10	3	7
Ph.D.	1	1	0	4	1	3	2	2	0	6	6	0
Engineering	26	18	8	47	31	16	62	42	20	44	32	12
M.Sc.	25	17	8	38	24	14	56	38	18	37	28	9
M.Phil.	0	0	0	5	4	1	6	4	2	7	4	3
Ph.D.	1	1	0	4	3	1	0	0	0	0	0	0
Medical Sciences	1	1	0	3	1	2	7	4	3	4	3	1
D.M.	0	0	0	2	0	2	3	1	2	0	0	0
M.D.	0	0	0	0	0	0	1	1	0	0	0	0
M.Phil.	1	1	0	0	0	0	2	1	1	4	3	1
Ph.D.	0	0	0	1	1	0	1	1	0	0	0	0
Agricultural Sciences	7	5	2	11	7	4	21	14	7	19	8	11
M.Sc.	4	3	1	8	5	3	14	10	4	11	4	7
M.Phil.	3	2	1	1	0	1	4	1	3	5	1	4
Ph.D.	0	0	0	2	2	0	3	3	0	3	3	0
Social Sciences	51	24	27	77	42	35	85	42	43	58	34	24
M.B.A.	39	19	20	59	30	29	49	28	21	38	26	12
M.Sc.	10	3	7	16	10	6	32	12	20	16	7	9
M.Phil.	1	1	0	1	1	0	3	1	2	4	1	3
Ph.D.	1	1	0	1	1	0	1	1	0	0	0	0
Education	6	0	6	15	2	13	22	9	13	35	10	25
M.A.	2	0	2	5	0	5	1	0	1	4	2	2
M.Ed.	1	0	1	6	2	4	19	9	10	29	7	22
M.Phil.	2	0	2	0	0	0	1	0	1	1	1	0
Ph.D.	1	0	1	4	0	4	1	0	1	1	0	1
Humanities	5	2	3	2	0	2	15	6	9	12	4	8
M.A.	0	0	0	0	0	0	12	5	7	5	1	4
M.Phil.	2	1	1	1	0	1	1	1	0	3	0	3
Ph.D.	3	1	2	1	0	1	2	0	2	4	3	1

Source: The University of the West Indies

TABLE 16. LABOUR FORCE BY EMPLOYMENT STATUS AND EDUCATIONAL ATTAINMENT
1996 - 2000

Educational Attainment	Year	Labour Force (00)			Unem- ployed as a % of Labour Force	Proportions (%) of		
		Total Labour Force	Employed	Unem- ployed		Labour Force	Employed	Unem- ployed
		(1)	(2)	(3)	(4)	(5)	(6)	(7)
Total All Education	1996	5,304	4,442	861	16.2	100	100	100
	1997	5,410	4,598	812	15.0	100	100	100
	1998	5,587	4,793	794	14.2	100	100	100
	1999	5,634	4,894	740	13.1	100	100	100
	2000	5,729	5,034	696	12.1	100	100	100
No Education	1996	31	26	5	16.1	0.6	0.6	0.6
	1997	33	29	4	12.1	0.6	0.6	0.5
	1998	26	21	4	15.4	0.5	0.4	0.5
	1999	24	22	2	8.3	0.4	0.4	0.3
	2000	22	19	3	19.6	0.4	0.4	0.4
Primary	1996	2,066	1,718	349	16.9	39.0	38.7	40.5
	1997	2,113	1,791	321	15.2	39.1	39.0	39.5
	1998	2,097	1,783	315	15.0	37.5	37.2	39.7
	1999	2,091	1,810	283	13.5	37.1	37.0	38.2
	2000	2,049	1,800	249	12.2	35.8	35.7	35.8
Secondary No O' Level Subjects	1996	1,296	1,036	260	20.1	24.4	23.3	30.2
	1997	1,314	1,063	250	19.0	24.3	23.1	30.8
	1998	1,370	1,130	241	17.6	24.5	23.6	30.4
	1999	1,393	1,168	225	16.1	24.7	23.9	30.4
	2000	1,415	1,206	211	14.9	24.7	24.0	30.3
Secondary 1-4 O' Level Subjects	1996	790	632	158	20.0	14.9	14.2	18.4
	1997	784	637	145	18.5	14.5	13.9	17.9
	1998	848	705	143	16.9	15.2	14.7	18.0
	1999	886	744	141	15.9	15.7	15.2	19.1
	2000	933	798	137	14.7	16.3	15.9	19.7
Secondary 5 or more O' Level Subjects	1996	779	703	77	9.9	14.7	15.8	8.9
	1997	800	717	83	10.4	14.8	15.6	10.2
	1998	875	790	83	9.5	15.7	16.5	10.5
	1999	853	770	83	9.7	15.1	15.7	11.2
	2000	917	830	88	9.6	16.0	16.5	12.6
University Education No Degree	1996	12	10	0	0.0	0.2	0.2	0.0
	1997	16	16	0	0.0	0.3	0.3	0.0
	1998	19	19	0	0.0	0.3	0.4	0.0
	1999	21	20	0	0.0	0.4	0.4	0.0
	2000	29	27	1	3.4	0.5	0.5	0.1
University Education Degree/Diploma/Certificate	1996	322	311	11	3.4	6.1	7.0	1.3
	1997	339	332	6	1.8	6.3	7.2	0.7
	1998	345	340	5	1.4	6.2	7.1	0.6
	1999	362	356	6	1.7	6.4	7.3	0.8
	2000	352	345	7	2.0	6.1	6.9	1.0
Educated in a Foreign Country/other	1996	6	6	0	0.0	0.1	0.1	0.0
	1997	13	13	0	0.0	0.2	0.3	0.0
	1998	7	6	1	14.3	0.1	0.1	0.1
	1999	5	4	0	0.0	0.1	0.1	0.0
	2000	11	10	0	0.0	0.2	0.2	0.0

Source: Central Statistical Office

TABLE 17. EXPENDITURE ON RESEARCH AND DEVELOPMENT BY SECTOR
1996 - 1999

Sector	R&D Expenditure (TT\$M)			
	1996	1997	1998	1999
	(1)	(2)	(3)	(4)
Total	45.6	49.2	51.5	62.4
Higher Education	7.2	8.5	8.8	11.2
Research Institutions	10.4	8.8	14.0	15.6
Government Departments	12.5	14.9	23.0	26.9
Government Industries	14.6	15.6	5.5	8.2
Private Industries	0.9	1.4	0.2	0.5

Source: Survey of Science and Technology Indicators, 1993 - 1997, Niherst

TABLE 17a. PERCENTAGE OF EXPENDITURE ON RESEARCH AND DEVELOPMENT BY SECTOR
1996 - 1999

Sector	Percentage of R&D Expenditure			
	1996	1997	1998	1999
	(1)	(2)	(3)	(4)
Total	100.0	100.0	100.0	100.0
Higher Education	15.8	17.3	17.1	17.9
Research Institutions	22.8	17.9	27.2	25.0
Government Departments	27.4	30.3	44.7	43.1
Government Industries	32.0	31.7	10.7	13.1
Private Industries	2.0	2.8	0.4	0.8

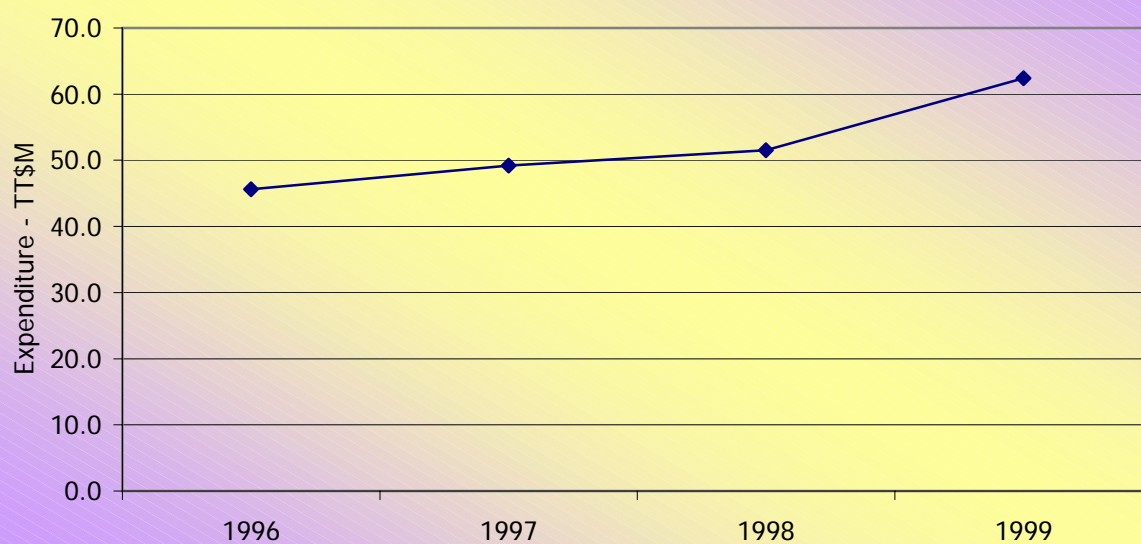
TABLE 17b. PERCENTAGE CHANGE IN EXPENDITURE ON RESEARCH AND DEVELOPMENT BY SECTOR
1996 - 1999

Sector	Percentage Change		
	1996 - 1997	1997 - 1998	1998 - 1999
	(1)	(2)	(3)
Total	7.9	4.7	21.2
Higher Education	18.1	3.5	27.3
Research Institutions	-15.4	59.1	11.4
Government Departments	19.2	54.4	17.0
Government Industries	6.8	-64.7	49.1
Private Industries	55.6	-85.7	150.0

TABLE 17c. EXPENDITURE ON RESEARCH AND DEVELOPMENT AS A PERCENTAGE OF
GROSS DOMESTIC PRODUCT
1996 - 1999

	1996	1997	1998	1999
	(1)	(2)	(3)	(4)
Research and Development/ Gross Domestic Product Percentage	0.13	0.13	0.14	0.15

**Chart 25: Expenditure on Research and Development
1996 - 1999**



Source: Table 17

**TABLE 18. USES OF FUNDS FOR GROSS CAPITAL FORMATION IN EDUCATIONAL
SERVICES BY TYPE OF INSTITUTION
1996 - 2000**

\$TT mn.					
Items	1996	1997	1998	1999	2000
	(1)	(2)	(3)	(4)	(5)
A. Total: Educational Services					
Gross Capital Formation	188.3	118.8	74.1	143.6	218.5
<i>of which:</i>					
1. Building and Other Construction	137.5	86.3	32.2	84.3	138.8
2. Plant Machinery and Equipment	14.6	2.0	0.8	25.6	9.2
3. Transport, Furniture and Office Equipment and Other Capital Investment	36.2	30.5	41.1	33.7	70.5
B. Government/Government Assisted and Private Schools (Gov't only)					
Gross Capital Formation	102.6	44.2	33.4	69.4	193.6
<i>of which:</i>					
1. Building and Other Construction	75.4	34.9	30.0	44.8	137.9
2. Plant Machinery and Equipment	0.0	2.0	0.8	0.0	1.0
3. Transport, Furniture and Office Equipment and Other Capital Investment	27.2	7.3	2.6	24.6	54.7
C. Research Institution (UWI)					
Gross Capital Formation	85.6	74.6	40.7	74.2	24.9
<i>of which:</i>					
1. Building and Other Construction	62.0	51.4	2.2	39.5	0.9
2. Plant Machinery and Equipment	14.6	25.6	8.2
3. Transport, Furniture and Office Equipment and Other Capital Investment	9.0	23.2	38.5	9.1	15.8
D. Other Institutions					
Gross Capital Formation		
<i>of which:</i>					
1. Building and Other Construction		
2. Plant Machinery and Equipment		
3. Transport, Furniture and Office Equipment and Other Capital Investment		

Source: Central Statistical Office

TABLE 19. COST PROFILE OF EDUCATIONAL SERVICES BY TYPE OF INSTITUTION
1996 - 2000

\$TT mn.					
Items	1996	1997	1998	1999	2000
	(1)	(2)	(3)	(4)	(5)
A. Total: Educational Services					
1. Gross Output	1,326.4	1,342.5	1,470.1	1,545.2	1,608.8
2. Total Operating Expense	1,304.1	1,320.0	1,377.9	1,441.4	1,496.1
3. Value Added	1,036.0	1,044.3	1,242.0	1,290.6	1,346.1
4. Compensation of Employees	1,013.7	1,021.9	1,149.8	1,186.8	1,233.6
B. Government/Government Assisted and Private Schools (Gov't only)					
1. Gross Output	1,057.8	1,064.7	1,107.6	1,131.1	1,162.0
2. Total Operating Expense	1,050.4	1,057.0	1,107.6	1,131.1	1,162.0
3. Value Added	843.6	847.7	959.1	967.3	1,001.1
4. Compensation of Employees	836.2	840.0	959.1	967.3	1,001.1
C. Research Institution (UWI)					
1. Gross Output	253.7	262.5	331.4	377.2	404.8
2. Total Operating Expense	245.0	254.0	240.9	274.2	294.3
3. Value Added	180.0	183.9	261.9	298.1	319.9
4. Compensation of Employees	171.2	175.4	171.4	195.1	209.4
D. Other Institutions (Cariri, IMA, Niherst)					
1. Gross Output	14.8	15.3	31.1	36.9	42.0
2. Total Operating Expense	8.7	9.0	29.4	36.1	39.8
3. Value Added	12.4	12.8	21.0	25.2	25.1
4. Compensation of Employees	6.2	6.4	19.3	24.4	23.1

Source: Central Statistical Office

TABLE 20. VALUE ADDED OF EDUCATIONAL SERVICES BY TYPE OF INSTITUTION
1996 - 2000
 (At Constant 1985 Prices)

\$TT mn.

Institutions	Real Value Added				
	1996	1997	1998	1999	2000
	(1)	(2)	(3)	(4)	(5)
Educational Services	811.6	806.6	918.6	928.8	929.5
<i>of which:</i>					
Government/Government Assisted Schools	664.4	686.2	780.7	781.6	782.2
Private Schools	24.4	17.8	18.3	18.1	18.6
Research Institutions (UWI)	122.8	102.6	119.6	129.1	128.7

Source: Central Statistical Office

TABLE 21. PERCENTAGE CHANGE IN REAL VALUE ADDED OF EDUCATIONAL SERVICES
BY TYPE OF INSTITUTION
1995 - 2000
 (At Constant 1985 Prices)

Institutions	Percentage Change in Real Value Added				
	1995-1996	1996-1997	1997-1998	1998-1999	1999-2000
	(1)	(2)	(3)	(4)	(5)
Educational Services	0.9	- 3.0	13.9	1.1	0.1
<i>of which:</i>					
Government/Government Assisted Schools	0.1	0.4	13.7	0.1	0.1
Private Schools	0.4	- 27.0	2.8	-1.1	2.8
Research Institutions	5.4	- 16.4	16.6	7.9	-0.3

Source: Central Statistical Office

TABLE 22. GOVERNMENT EXPENDITURE ON EDUCATION
1996 - 2000

Year	Expenditure on Education	Total Government Expenditure	GDP Current Market Prices	Expenditure on Education as a Percentage of Total Expenditure	Expenditure on Education as a Percentage of GDP	<i>Per Capita</i> Government Expenditure on Education
	\$TT mn.					\$TT
	(1)	(2)	(3)	(4)	(5)	(6)
1996	1,159.7	9,270.0	34,586.6	12.5	3.4	917.8
1997	1,021.2	9,694.1	36,626.2	10.5	2.8	801.1
1998	1,126.2	9,058.1	39,796.1	12.4	2.8	881.5
1999	1,130.3	10,370.3	43,254.5	10.9	2.6	880.4
2000	1,153.5	11,604.0	50,871.5	9.9	2.3	894.1

Source: Central Statistical Office

TABLE 23. NUMBER OF PATENT APPLICATIONS BY RESIDENTS AND NON-RESIDENTS
1996 - 2000

Applications	1996	1997	1998	1999	2000
	(1)	(2)	(3)	(4)	(5)
Total	119	171	107	120	154
<i>of which:</i>					
Residents	10	17	1	3	6
Non-Residents	109	154	106	117	148

Source: Registrar General Department
Intellectual Property Registry

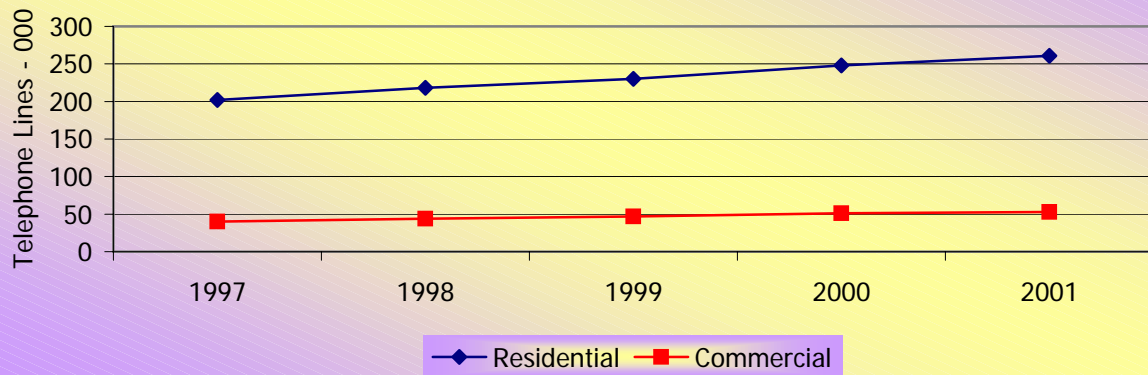
TABLE 24: INFORMATION AND COMMUNICATION TECHNOLOGY INDICATORS
1997 - 2001

(Nos. 000)

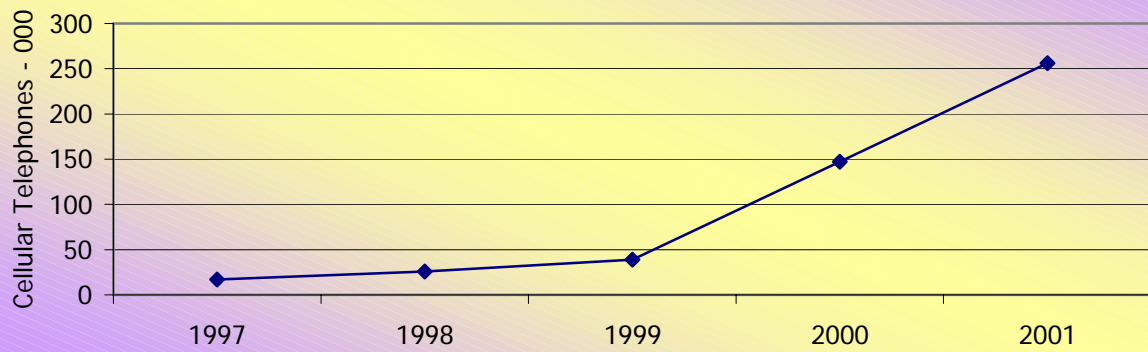
Indicator	Period				
	1997	1998	1999	2000	2001
	(1)	(2)	(3)	(4)	(5)
Telephone Lines:					
Residential	202	218	230	248	261
Paystations	2	2	2	2	3
Commercial	40	44	47	51	53
Cellular Telephones	17	26	39	147	256
Internet Subscribers	2	9	17	28	39

Source: Telecommunication Services of Trinidad and Tobago
Niherst - Survey of the Utilisation of Information Technology by Households, 2001

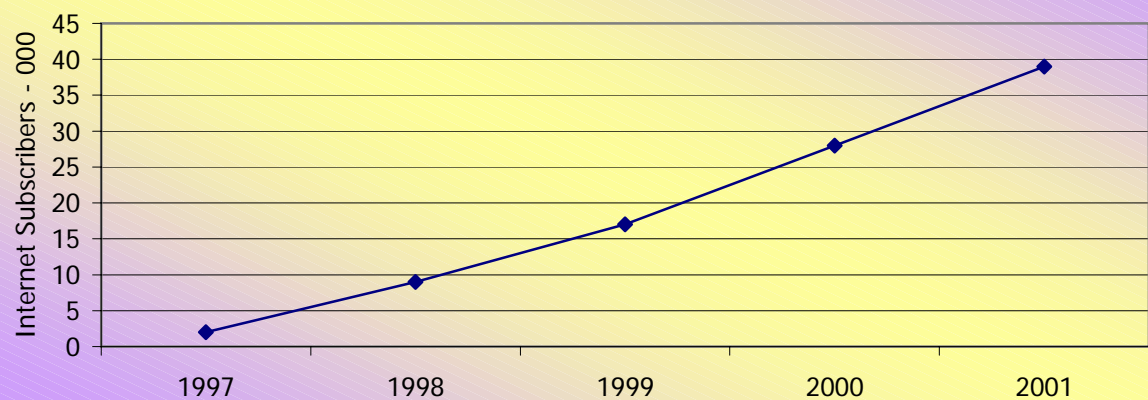
**Chart 26: Number of Residential and Commercial Telephone Lines
1997 - 2001**



**Chart 27: Number of Cellular Telephones
1997 - 2001**



**Chart 28: Number of Internet Subscribers
1997 - 2001**



Source: Table 24

TABLE 25. SOCIAL AND ECONOMIC INDICATORS
1996 - 2000

Social Indicators	1996	1997	1998	1999	2000
	(1)	(2)	(3)	(4)	(5)
Population (000 Population)	1263.6	1,274.8*	1,277.6	1,283.9	1,290.1
<i>of which:</i>					
Male	635.3	636.3	638.1	640.9	643.7
Female	628.3	638.5	639.6	643.0	646.3
Labour Force (000)	530.4	541.0	558.7	563.4	572.9
<i>of which:</i>					
Employed	444.3	459.8	479.3	489.4	503.3
Male	263.6	294.5	305.5	310.1	317.0
Female	161.7	165.3	173.8	179.3	186.3
Unemployed	86.1	81.2	79.4	74.0	69.6
Male	43.1	41.3	39.0	37.9	36.1
Female	43.1	39.9	40.4	36.1	33.5
Unemployment Rate	16.2	15.0	14.2	13.1	12.1
Male	13.2	12.3	11.3	10.9	10.2
Female	21	19.4	18.9	16.8	15.2
Birth Rate (000 Population)	14.2	14.4	14.0	14.1	13.4
Death Rate (000 Population)	7.4	7.1	7.5	7.8	7.3
Infant Mortality Rate	16.2	15.6	18.6	17.6	21.1
Economic Indicators					
Inflation (% Change)	3.3	3.6	5.6	3.4	3.5
Minimum Wage Rates (% Change)	2.9	1.9	2.4	1.5	2.8
GDP at Market Prices (\$TT mn.)	34,586.6*	36,626.2*	39,796.1	43,254.5	50,871.5
GNP (\$TT mn.)	30,944.6	33,635.8	36,292.0	40,069.5	47,890.2
GNP <i>Per Capita</i> (\$TT)	24,489.2	26,403.8	28,313.3	33,002.9	36,781.2
Foreign Trade (\$TT mn.)					
Imports	12,989.1	18,905.9	18,965.5	17,277.8	20,841.9
<i>of which:</i>					
Capital Goods	3,960.0	8,759.0	7,443.5	5,553.3	6,070.6
Exports	15,028.9	15,903.0	14,258.8	17,667.0	26,923.5
<i>of which:</i>					
Capital Goods	592.8	625.0	463.6	686.3	357.4
Balance of Trade	2,039.8	-3,018.6	-4,702.9	389.2	6,081.6

*revised

Source: Central Statistical Office

TABLE 26. PRODUCTION OF SELECTED COMMODITIES
1996 - 2000

Commodities		1996	1997	1998	1999	2000
		(1)	(2)	(3)	(4)	(5)
Agriculture						
Sugar	(000 tonnes)	134	137	101	112	162
Energy						
Crude	(million barrels)	47	45	45	46	44
Natural Gas	(million cu. m)	9,057	9,137	10,294	11,886	15,092
Electricity	(million kwh)	4,488	4,841	5,194	5,191	5,412
Chemicals						
Cement	(000 tonnes)	617	652	690	688	743
Fertilizer		2,674	2,691	3,118	3,770	3,738
Methanol		1,354	1,520	1,793	2,031	2,042
Iron and Steel						
Direct Reduced Iron	(000 tonnes)	954	1,134	828	682	978
Billets		644	747	602	504	480
Wire Rods		575	668	512	415	437

Source: Central Statistical Office

Chart 29: Production of Sugar, 1996 - 2000

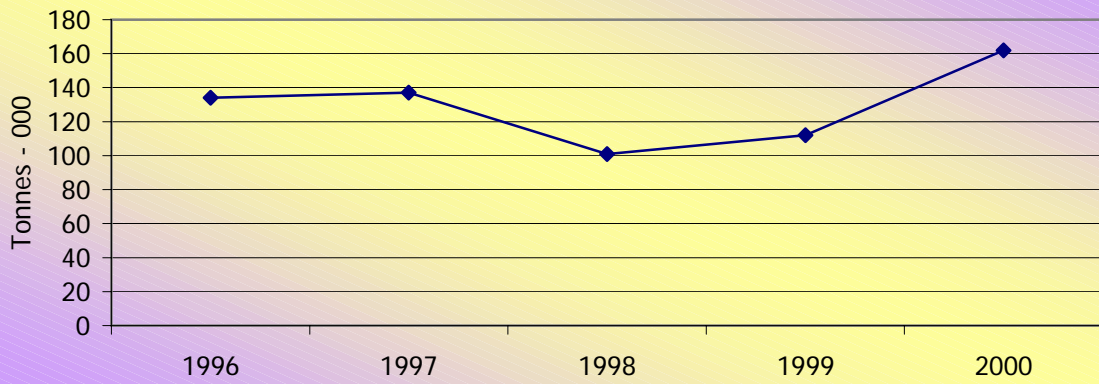


Chart 30: Production of Crude, 1996 - 2000

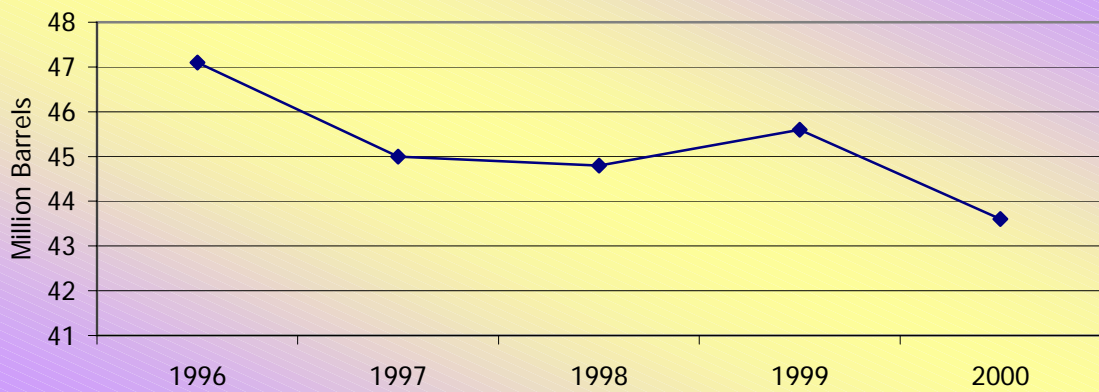
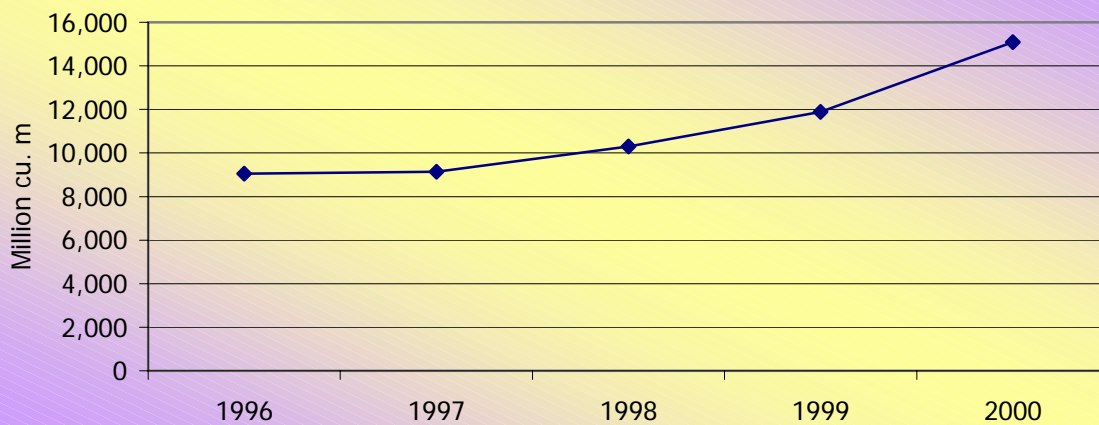


Chart 31: Production of Natural Gas, 1996 - 2000



Source: Table 26

Chart 32: Production of Electricity, 1996 - 2000

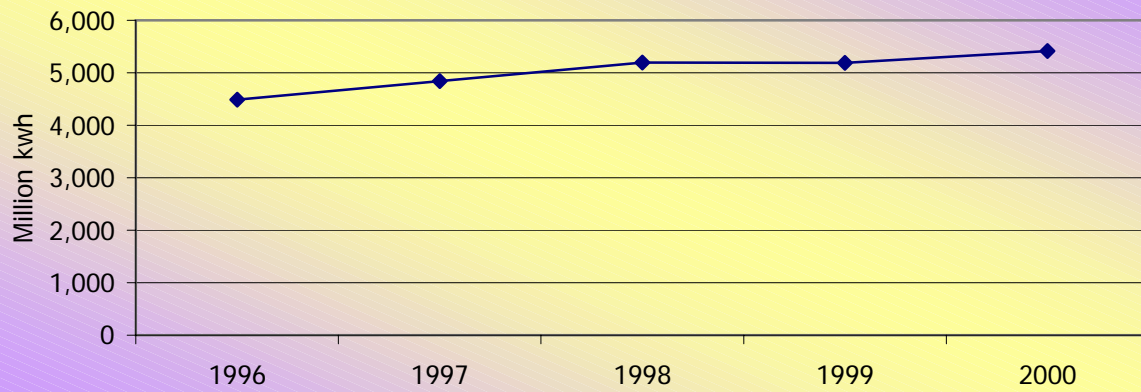


Chart 33: Production of Cement, 1996 - 2000

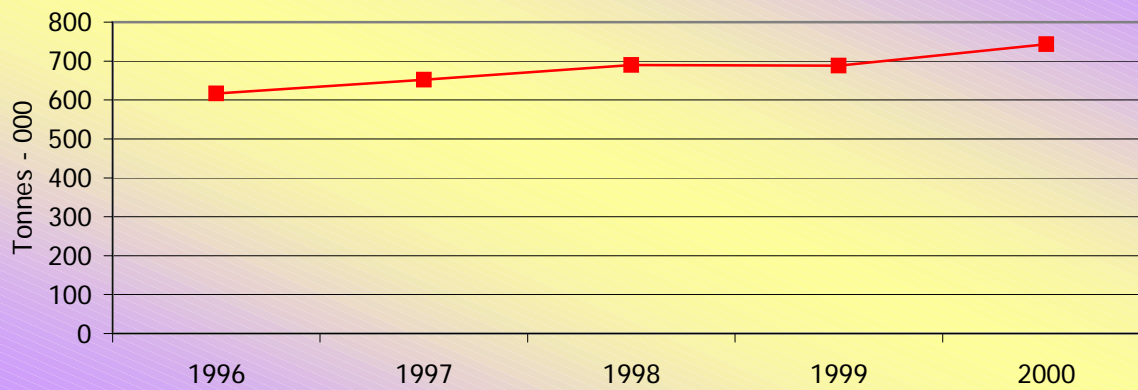
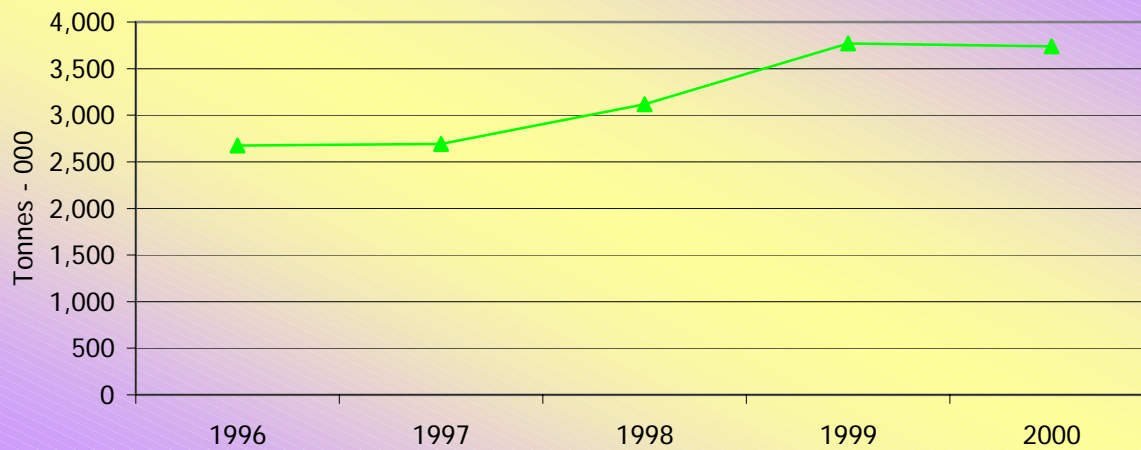


Chart 34: Production of Fertilizer, 1996 - 2000



Source: Table 26

Chart 35: Production of Methanol, 1996 - 2000

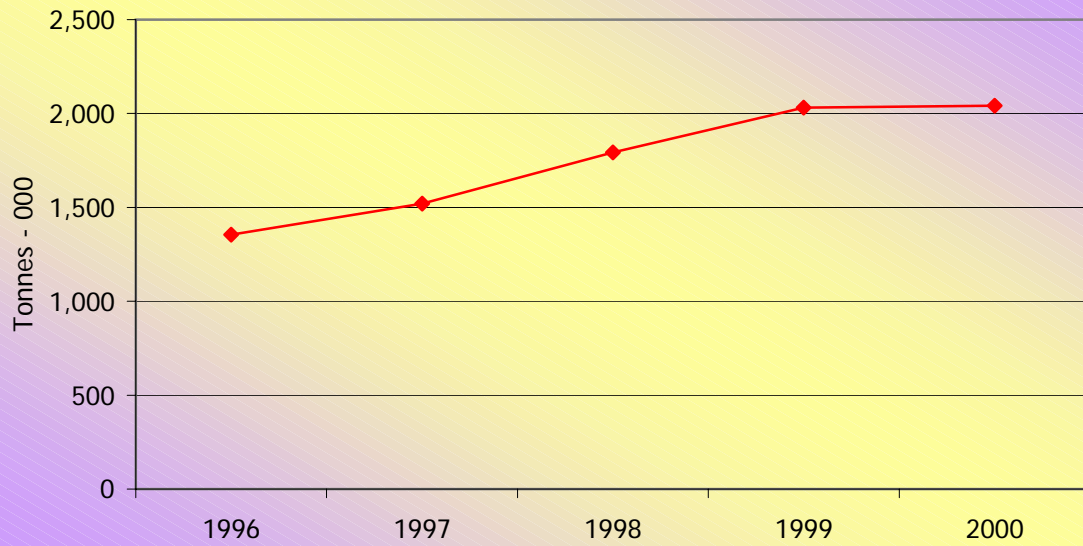
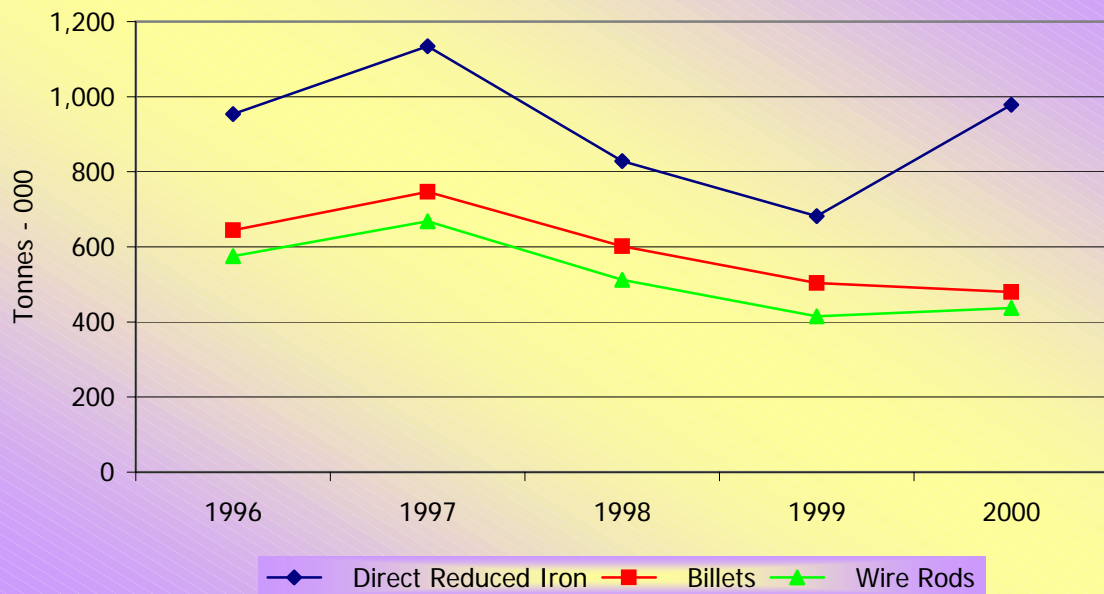


Chart 36: Production of Iron and Steel, 1996 - 2000



Source: Table 26